

# Sliding Bypassing, 3 Panels

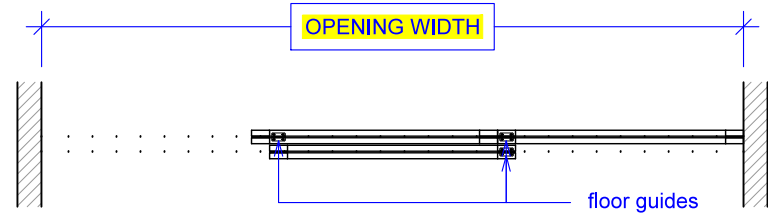
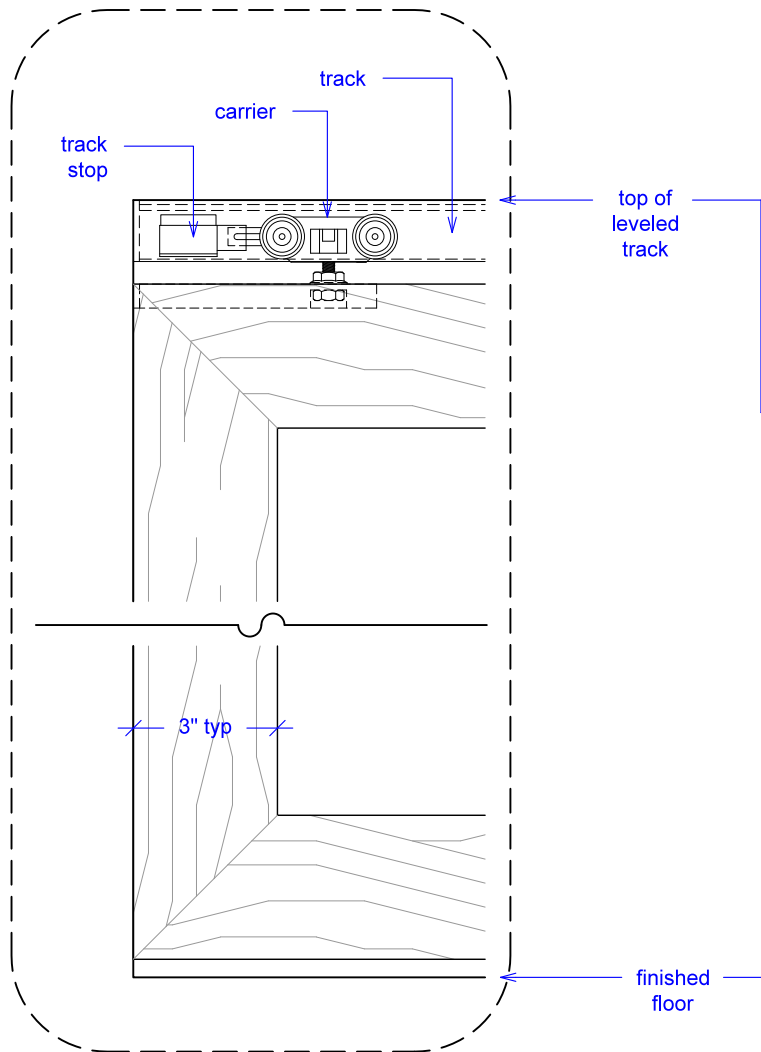
(SB3-RD)

ELEVATION

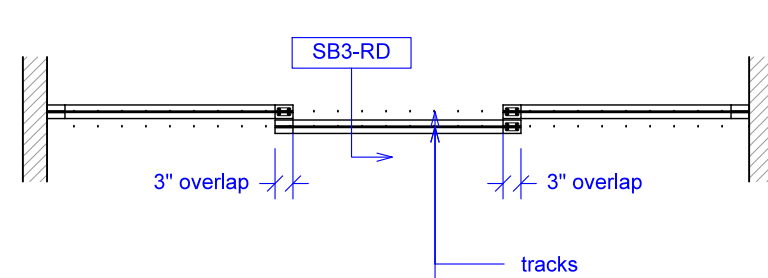
RAYDOOR STANDARD  
SYSTEM DRAWINGS  
©2020



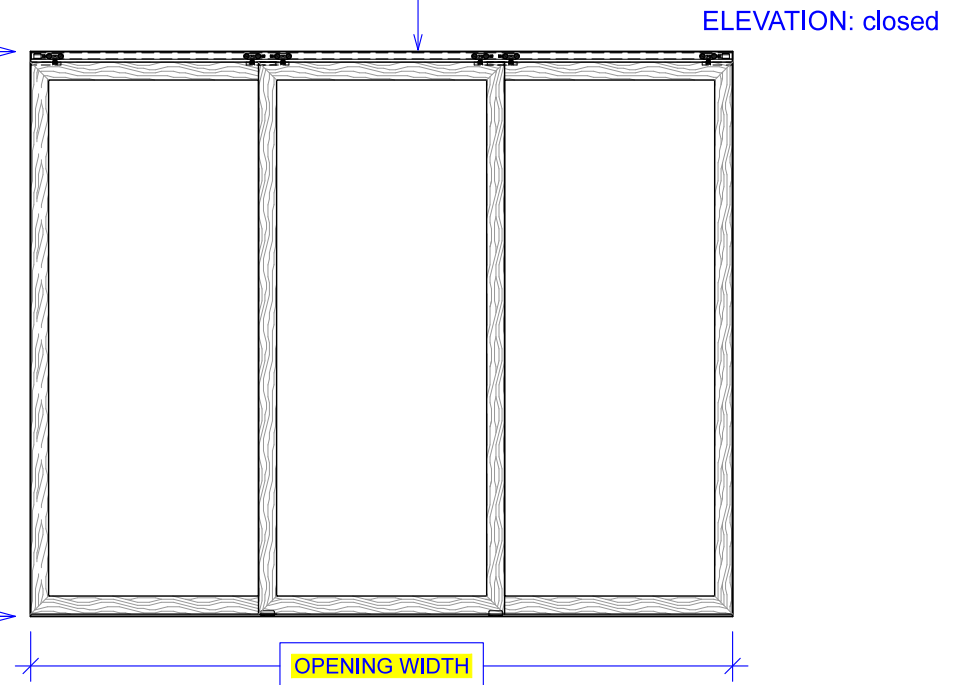
YOUR OPENING HEIGHT = PANEL +  $2\frac{1}{8}$ "  
YOUR OPENING WIDTH = (3 x PANEL) - 6"



PLAN: open



PLAN: closed

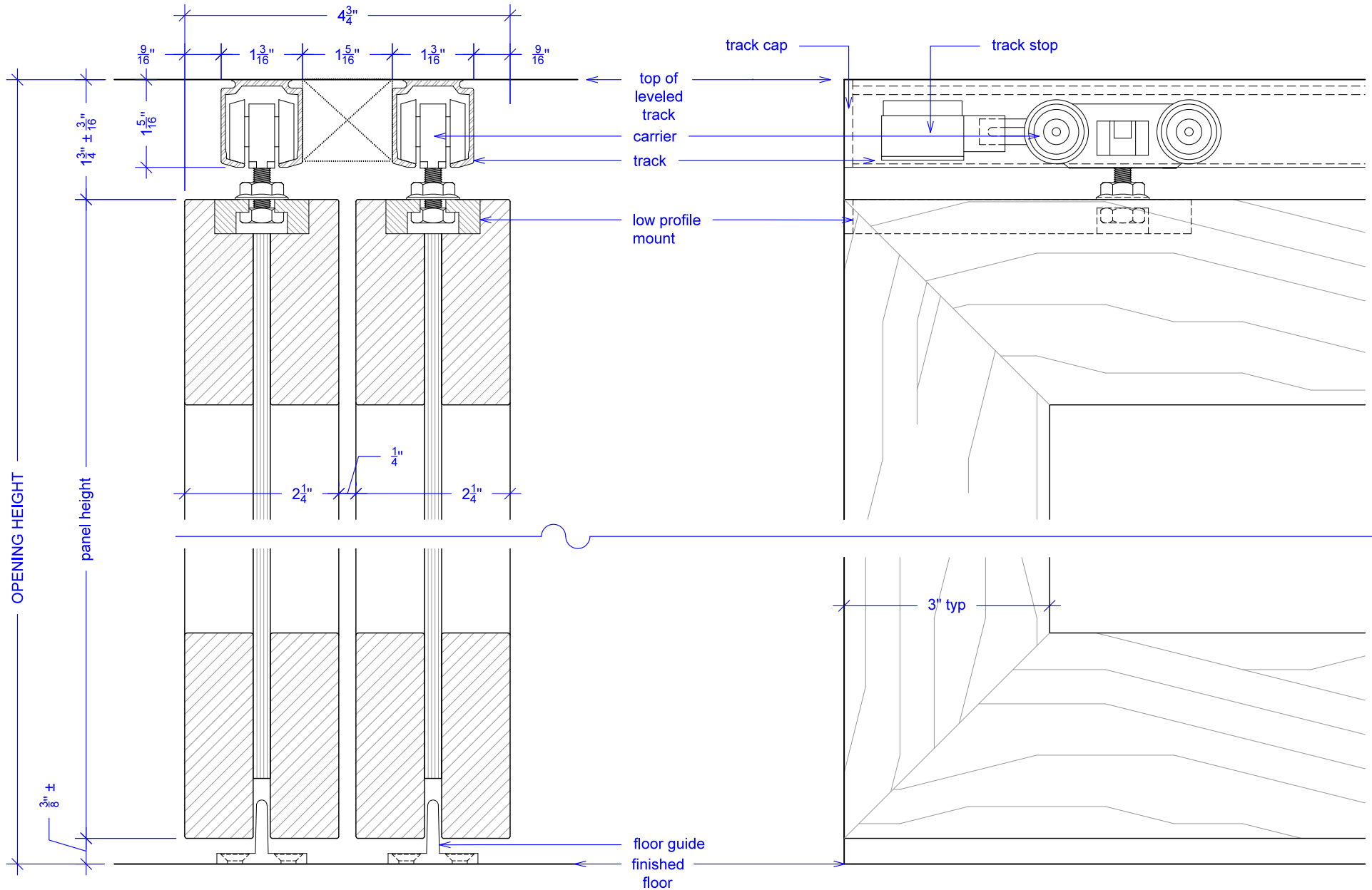


# Sliding Bypassing, 3 Panels

(SB3-RD)

## SECTION

RAYDOOR STANDARD  
SYSTEM DRAWINGS  
©2020



NOTE: each panel weights approximately 75-110 lbs.  
Secure tracks accordingly.

# Sliding Bypassing, 3 Panels

(SB3-RD)

## OPERATION OVERVIEW

RAYDOOR STANDARD  
SYSTEM DRAWINGS  
©2020



KEY:



floor guide



track stop