

Sliding Bypass w/ Soft-Close, 2 Panels

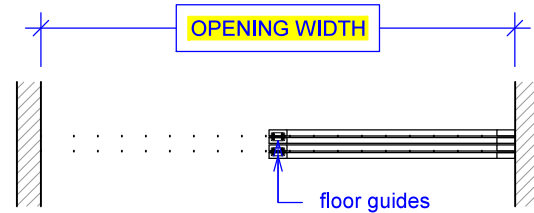
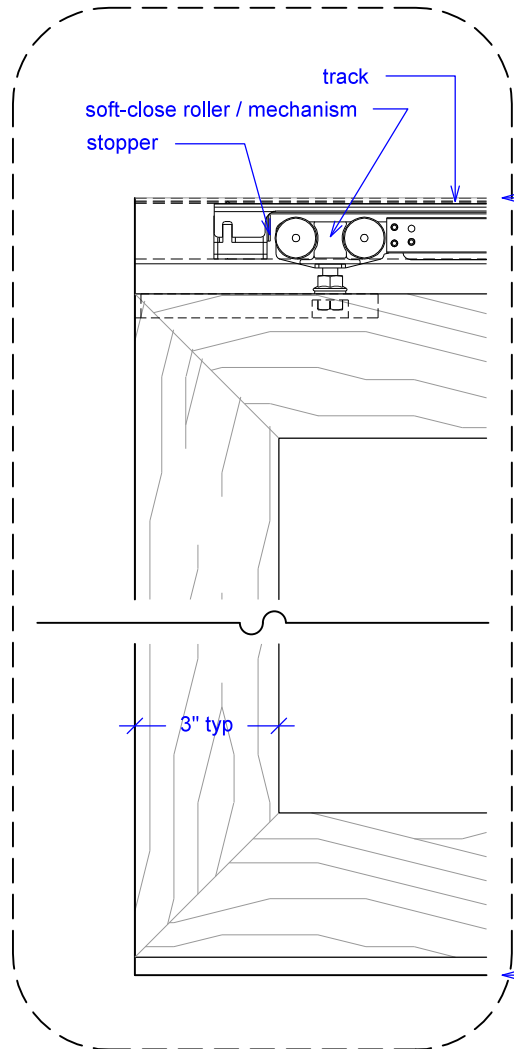
(SB2-SC)

ELEVATION

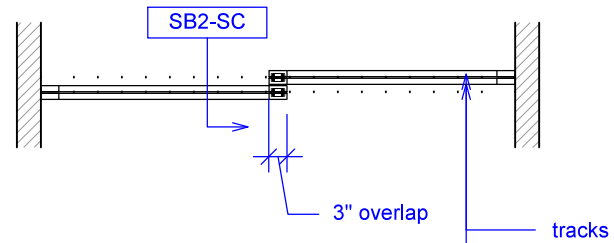
RAYDOOR STANDARD
SYSTEM DRAWINGS
©2020



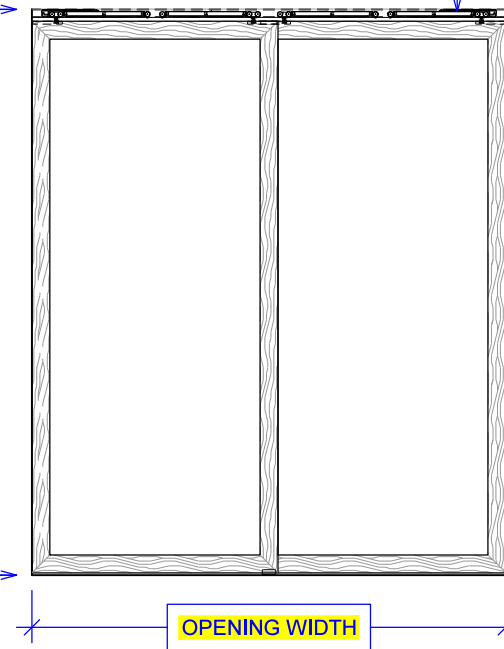
YOUR OPENING HEIGHT = PANEL + $2\frac{3}{8}$ "
YOUR OPENING WIDTH = (2 x PANEL) - 3"



PLAN: open



PLAN: closed



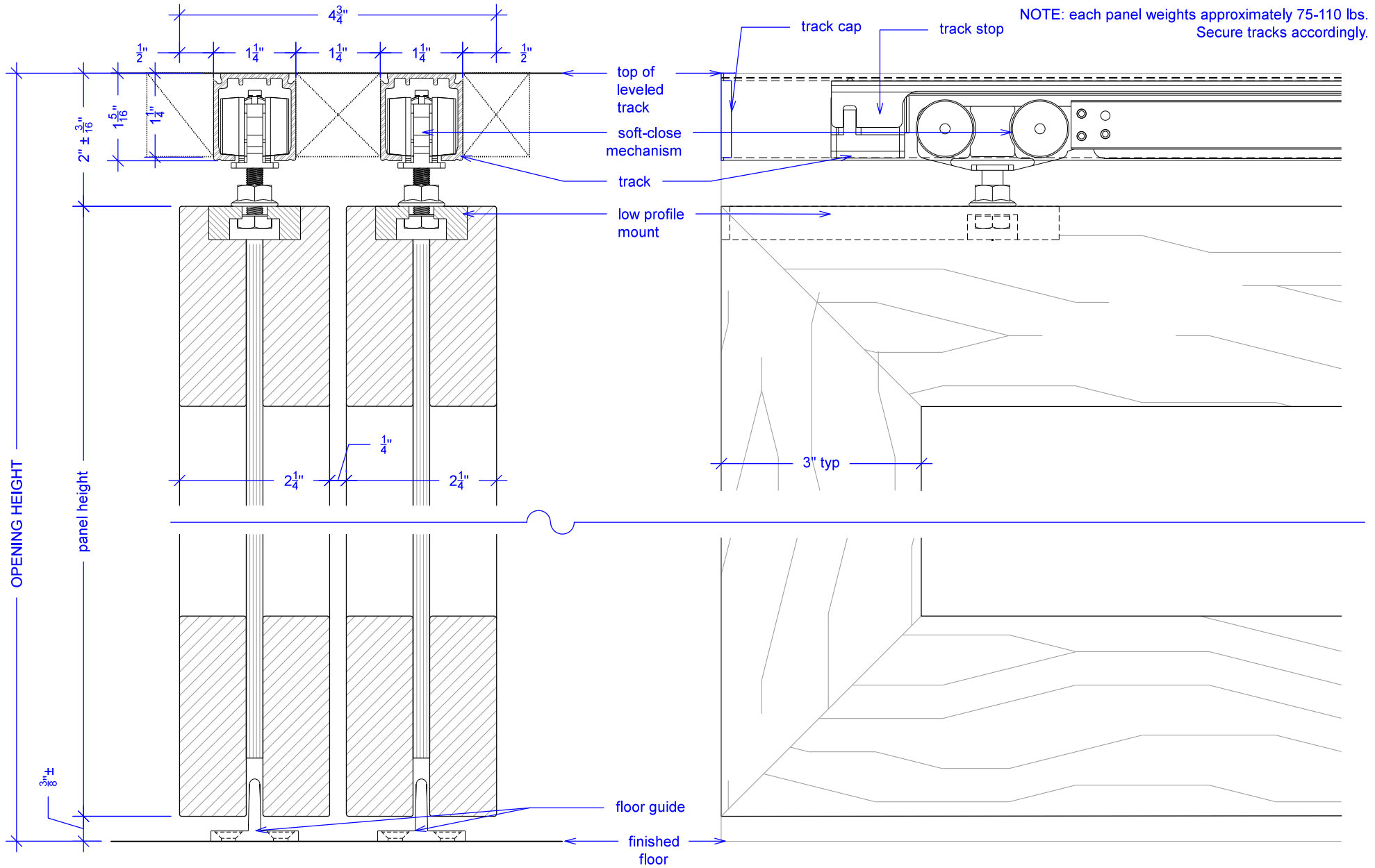
ELEVATION: closed

Sliding Bypass w/ Soft-Close, 2 Panels

(SB2-SC)

SECTION

RAYDOOR STANDARD
SYSTEM DRAWINGS
©2020

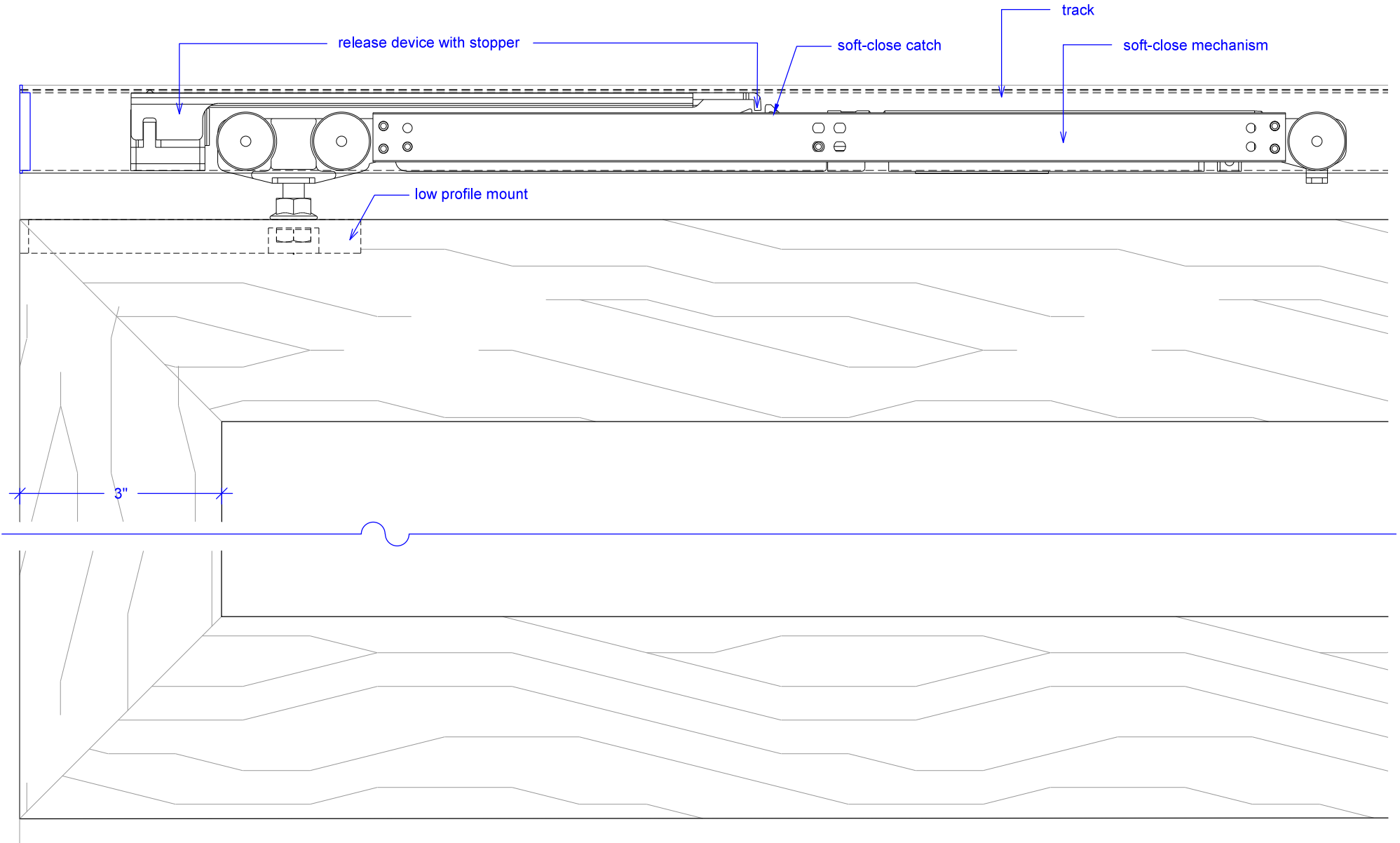


Sliding Bypass w/ Soft-Close, 2 Panels

(SB2-SC)

SOFT-CLOSE HARDWARE

RAYDOOR STANDARD
SYSTEM DRAWINGS
©2020

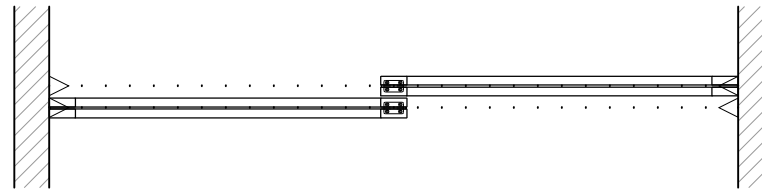
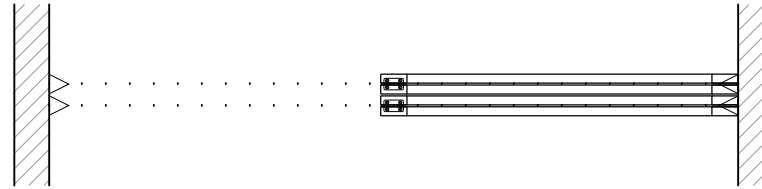
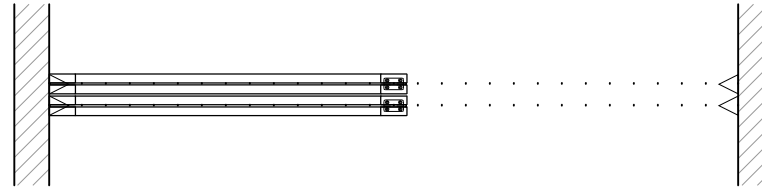


Sliding Bypass w/ Soft-Close, 2 Panels

(SB2-SC)

OPERATION OVERVIEW

RAYDOOR STANDARD
SYSTEM DRAWINGS
©2020



KEY:



floor guide



Stopper / release device