

Sliding Bypassing, 2 Panels

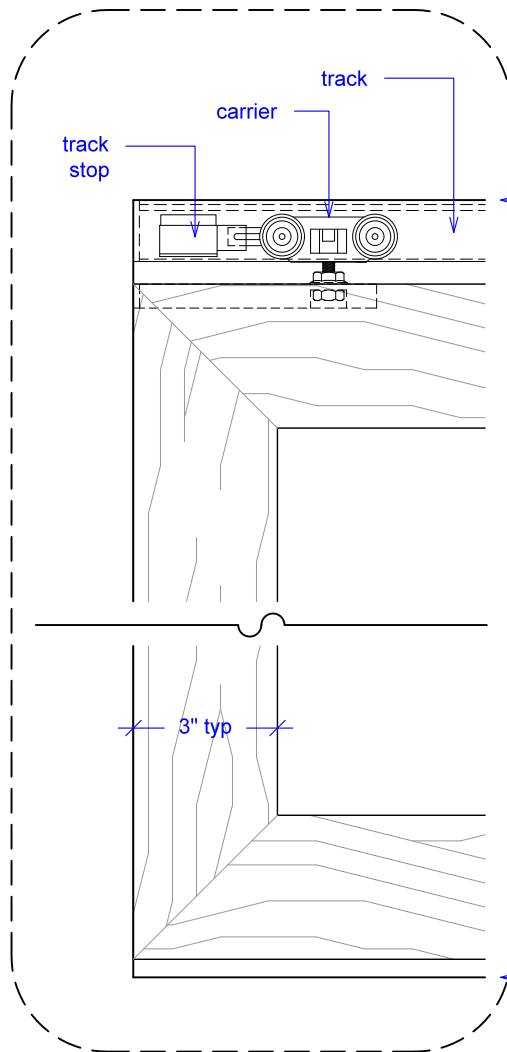
(SB2-RD)

ELEVATION

RAYDOOR STANDARD
SYSTEM DRAWINGS
©2020

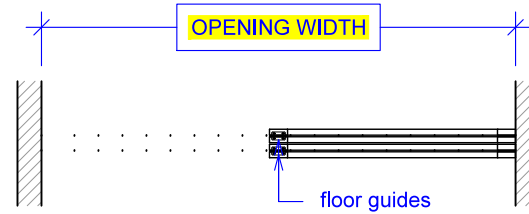


YOUR OPENING HEIGHT = PANEL + $2\frac{1}{8}$ "
YOUR OPENING WIDTH = (2 x PANEL) - 3"

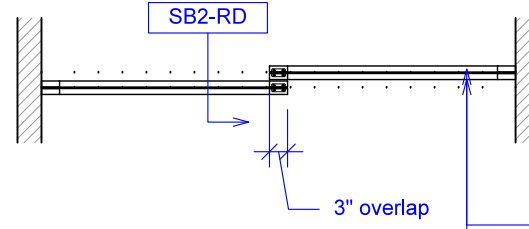


top of leveled track

finished floor



PLAN: open

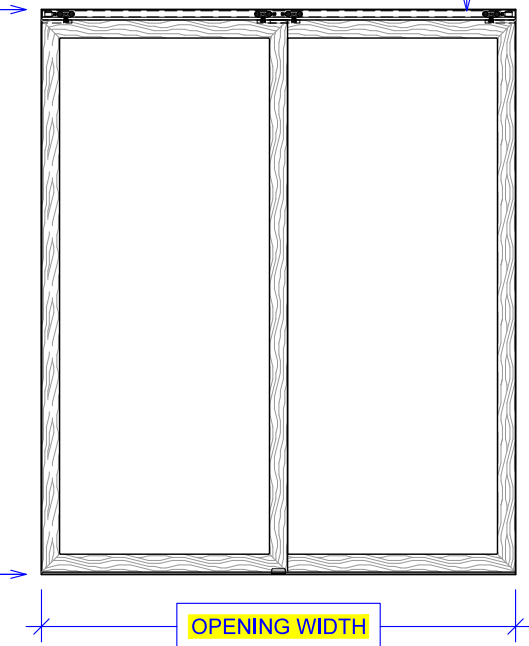


PLAN: closed

ELEVATION: closed

OPENING HEIGHT

OPENING WIDTH

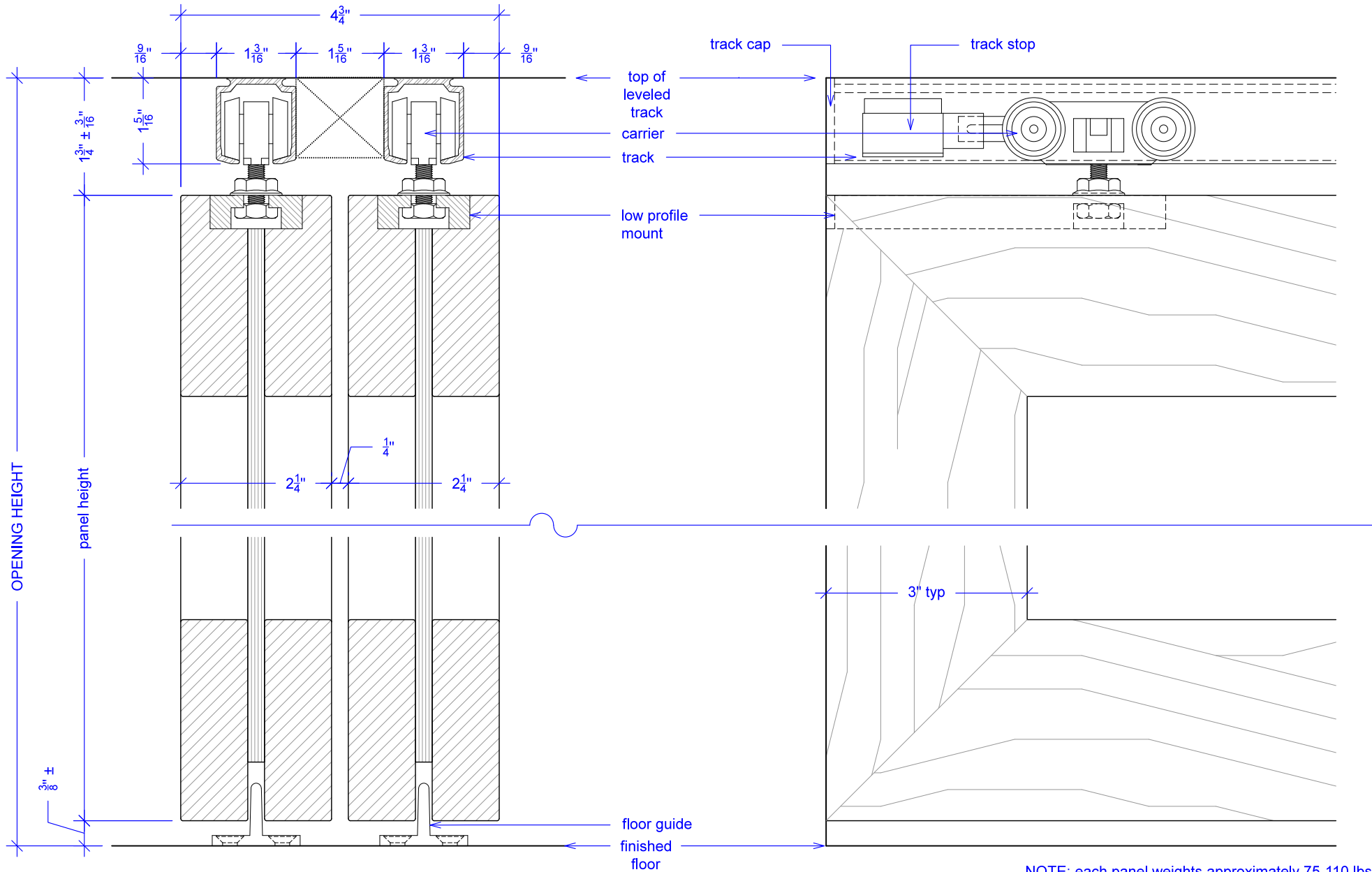


Sliding Bypassing, 2 Panels

(SB2-RD)

SECTION

RAYDOOR STANDARD
SYSTEM DRAWINGS
©2020



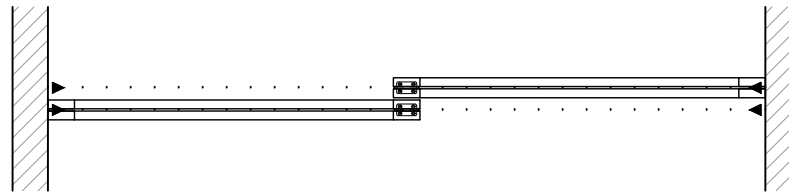
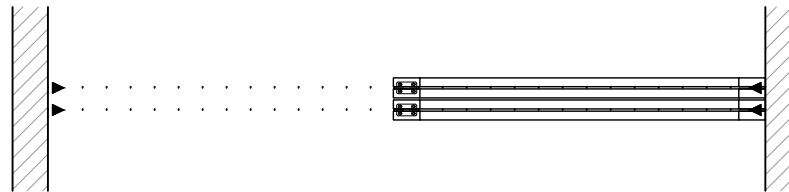
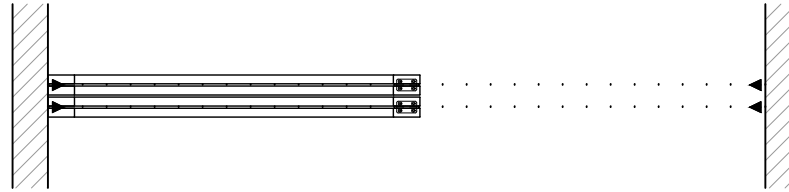
NOTE: each panel weights approximately 75-110 lbs.
Secure tracks accordingly.

Sliding Bypassing, 2 Panels

(SB2-RD)

OPERATION OVERVIEW

RAYDOOR STANDARD
SYSTEM DRAWINGS
©2020



KEY:



floor guide



track stop