

Sliding, 1 Panel

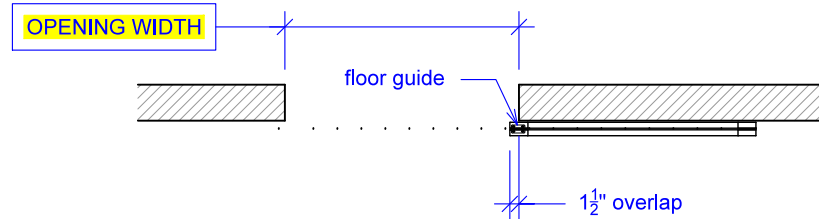
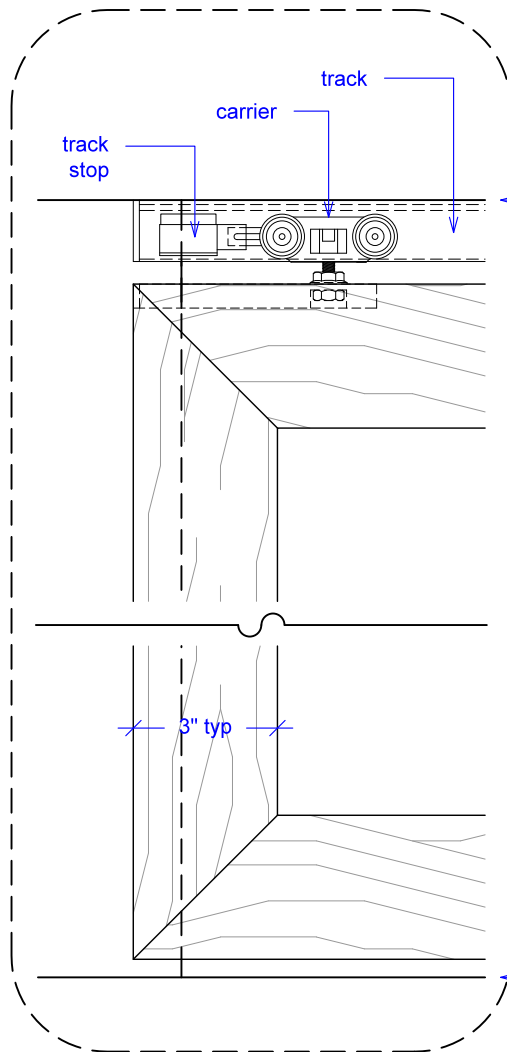
(S1-RD)

ELEVATION

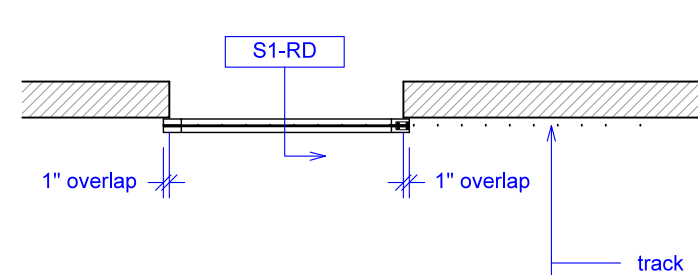
RAYDOOR STANDARD
SYSTEM DRAWINGS
©2020



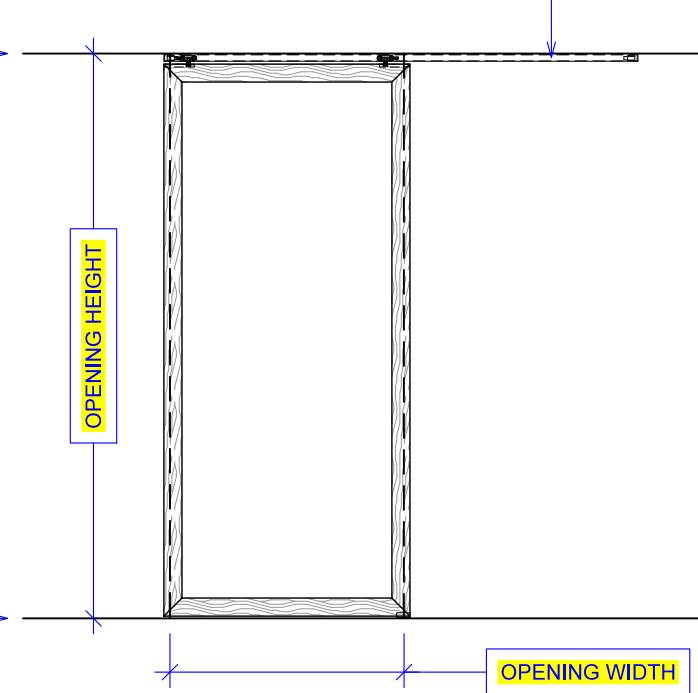
YOUR OPENING HEIGHT = PANEL + $2\frac{1}{8}$ "
YOUR OPENING WIDTH = PANEL - 2"



PLAN: open



PLAN: closed



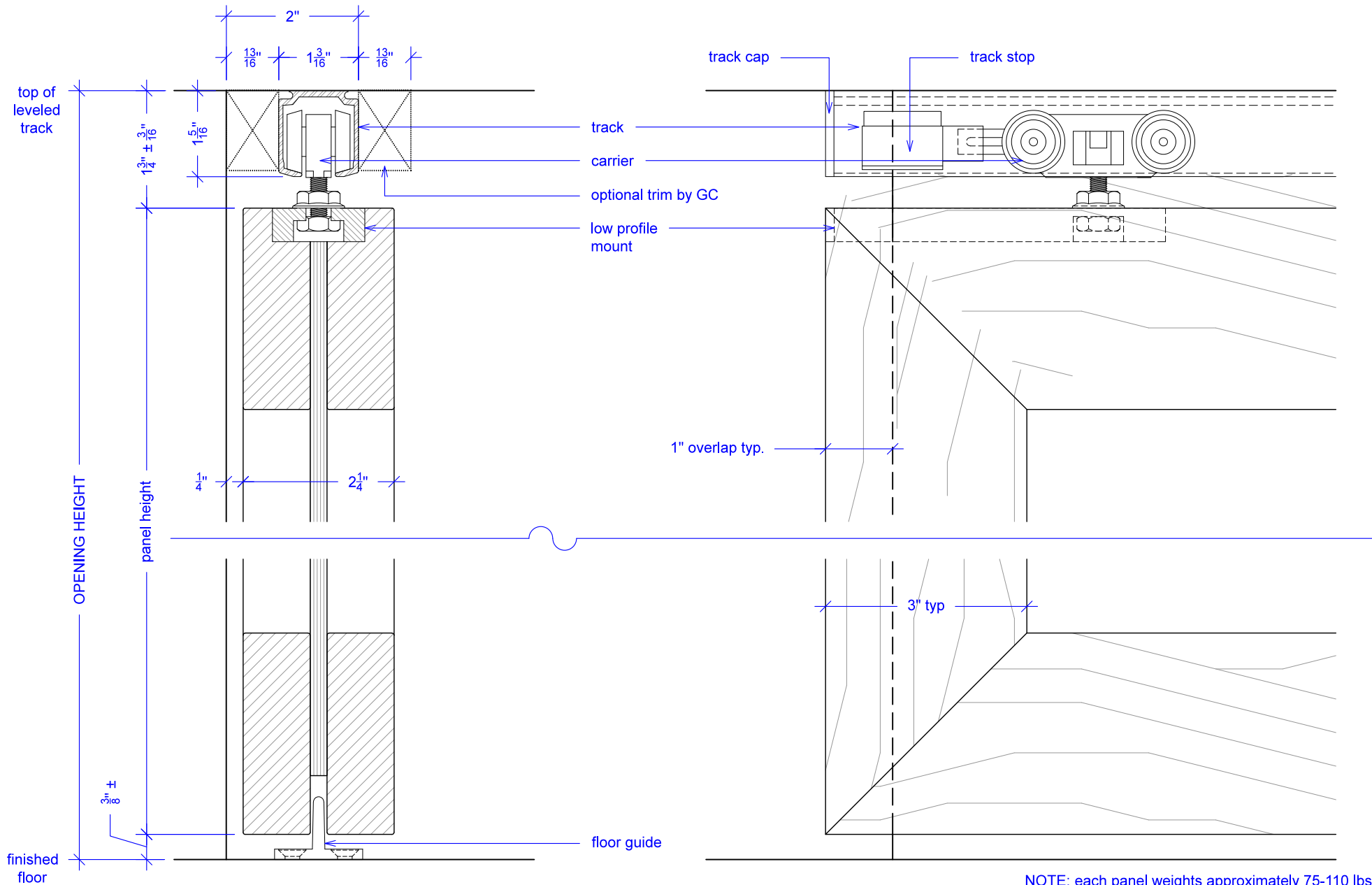
ELEVATION: closed

Sliding, 1 Panel

(S1-RD)

SECTION

RAYDOOR STANDARD
SYSTEM DRAWINGS
©2020



NOTE: each panel weights approximately 75-110 lbs.
Secure tracks accordingly.

Sliding, 1 Panel

(S1-RD)

OPERATION OVERVIEW

RAYDOOR STANDARD
SYSTEM DRAWINGS
©2020



KEY:



floor guide



track stop