

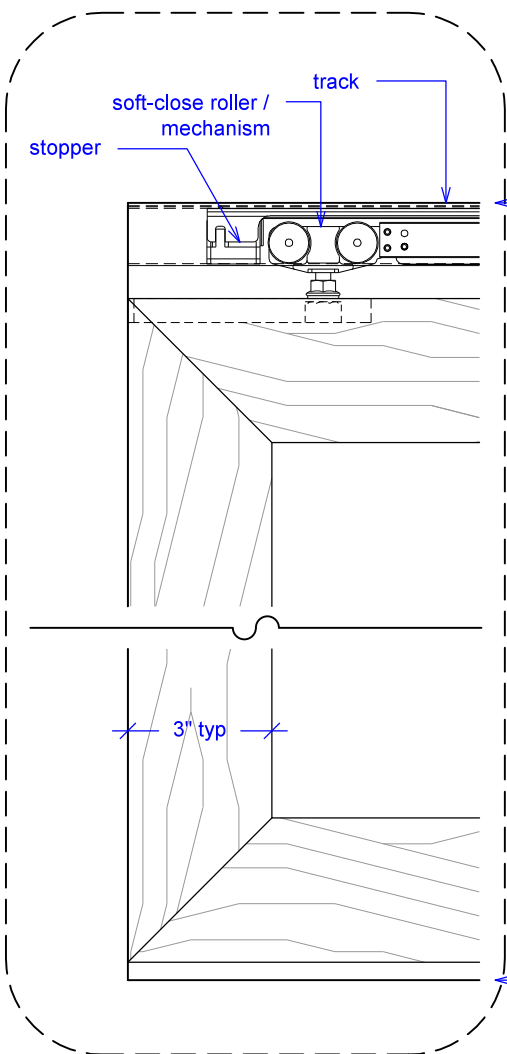
Sliding w/ Soft-Close, 1 Sided Overlap, 1 Panel

(S1-1SO-SC)
ELEVATION

RAYDOOR STANDARD
SYSTEM DRAWINGS
©2020

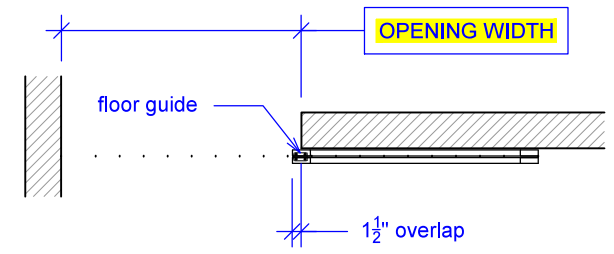


YOUR OPENING HEIGHT = PANEL + 2³/₈"
YOUR OPENING WIDTH = PANEL - 1"

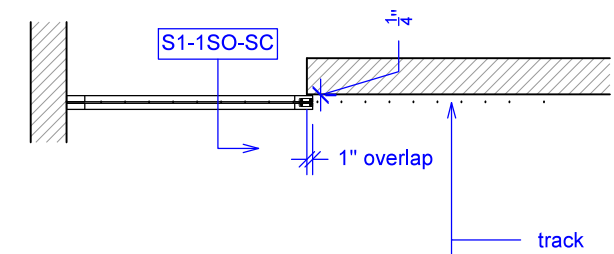


top of leveled track

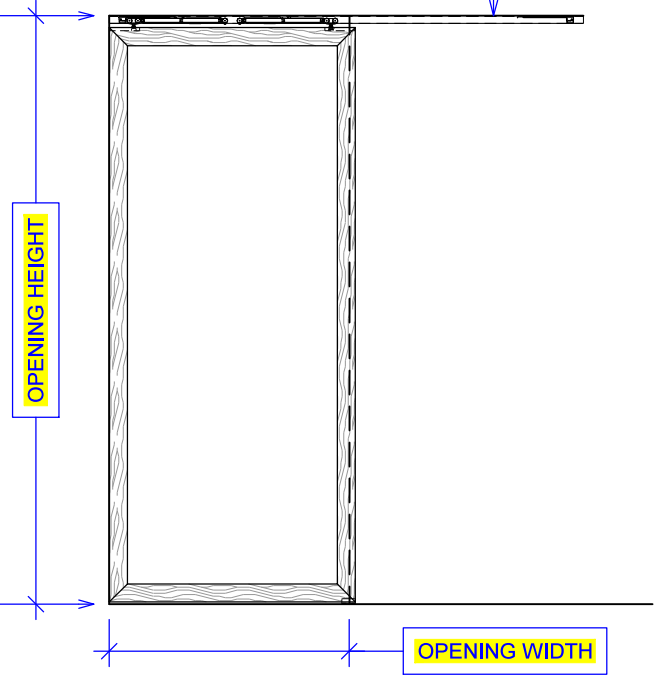
finished floor



PLAN: open



PLAN: closed

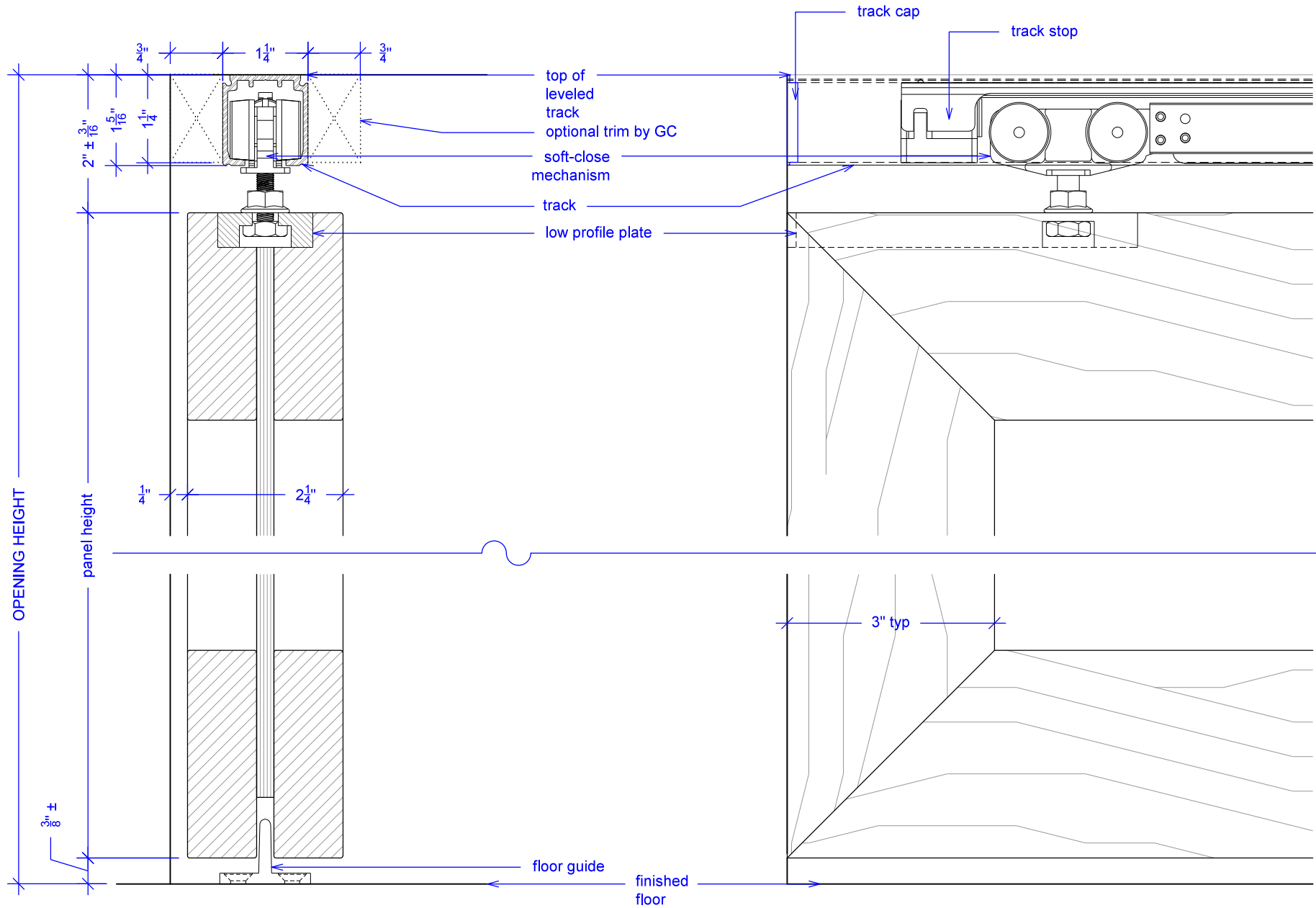
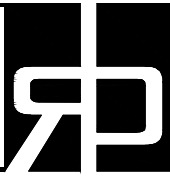


ELEVATION: closed

Sliding w/ Soft-Close, 1 Sided Overlap, 1 Panel

(S1-1SO-SC)
SECTION

RAYDOOR STANDARD
SYSTEM DRAWINGS
©2020

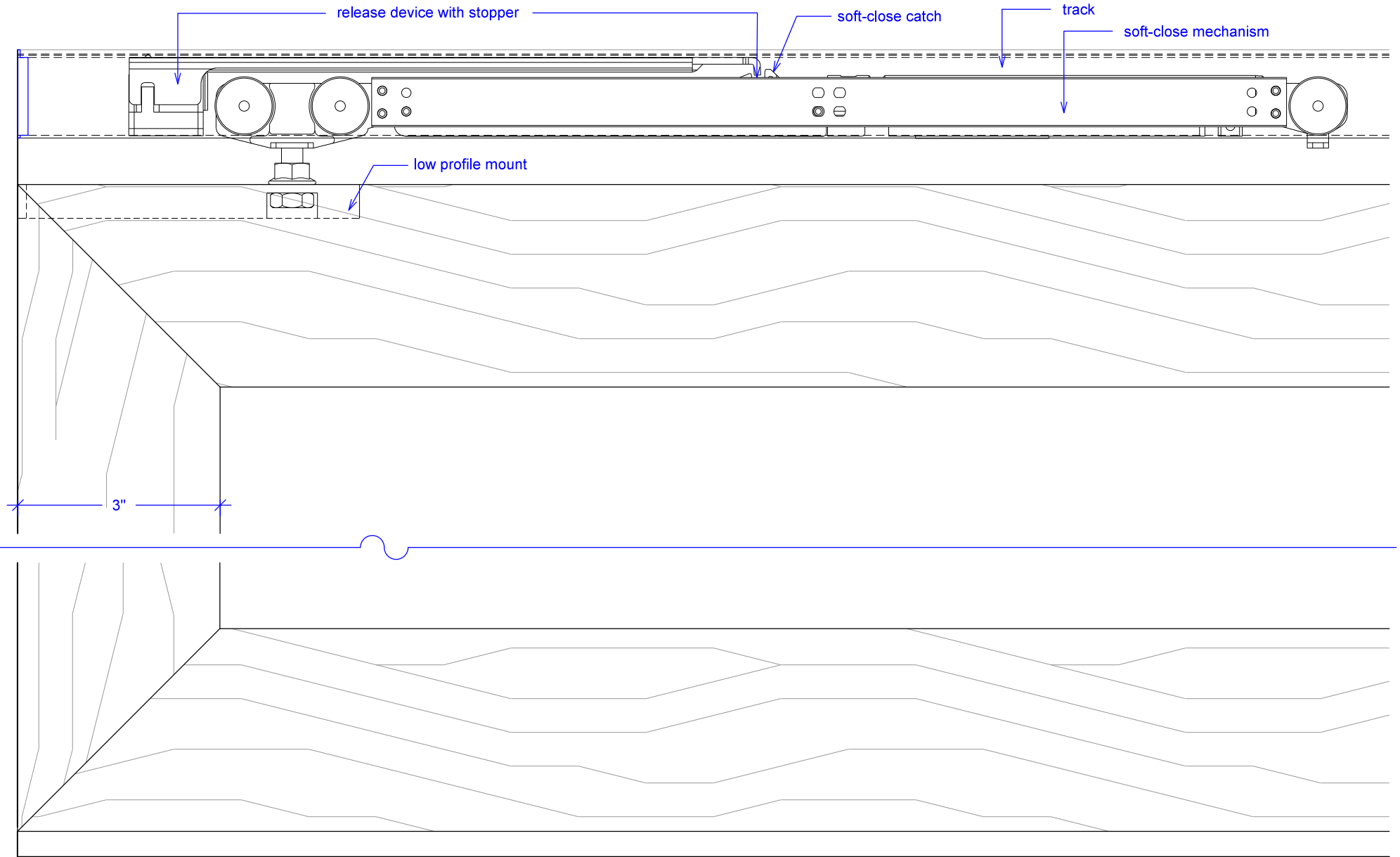


Sliding w/ Soft-Close, 1 Sided Overlap, 1 Panel

(S1-1SO-SC)

SOFT-CLOSE HARDWARE

RAYDOOR STANDARD
SYSTEM DRAWINGS
©2020

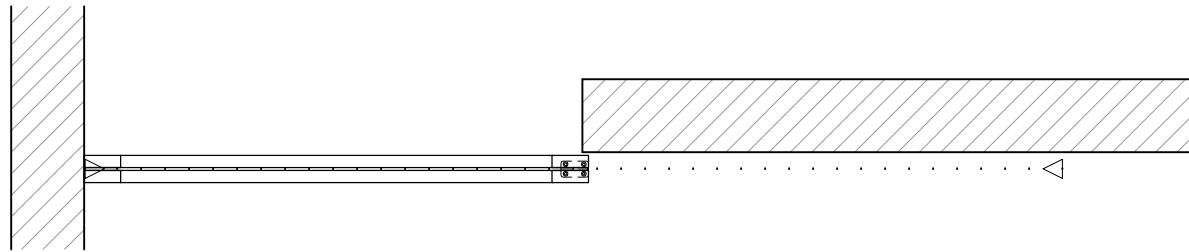
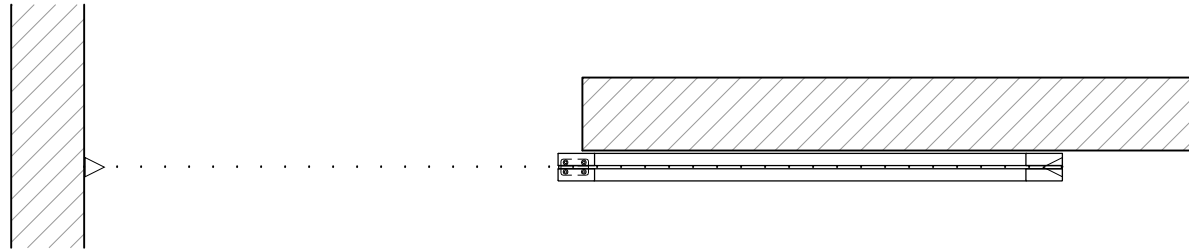


Sliding w/ Soft-Close, 1 Sided Overlap, 1 Panel

(S1-1SO-SC)

OPERATION OVERVIEW

RAYDOOR STANDARD
SYSTEM DRAWINGS
©2020



KEY:



floor guide



Stopper / release device