

Sliding, 1 Panel, 1 Side Overlap, Wall Mount

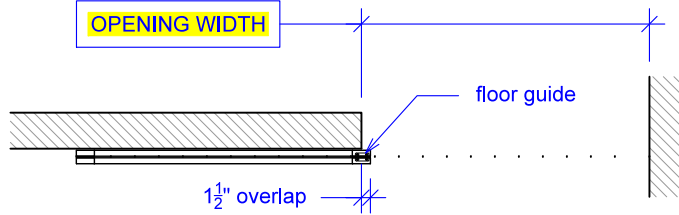
(S1-1SO-WM-RD)

ELEVATION

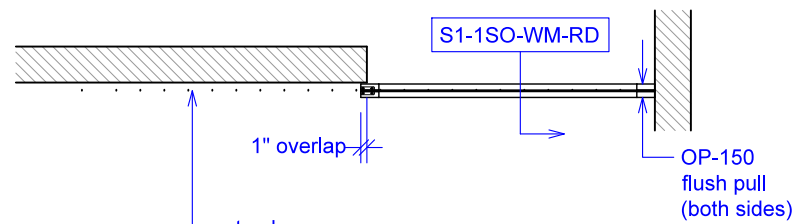
RAYDOOR STANDARD
SYSTEM DRAWINGS
©2020



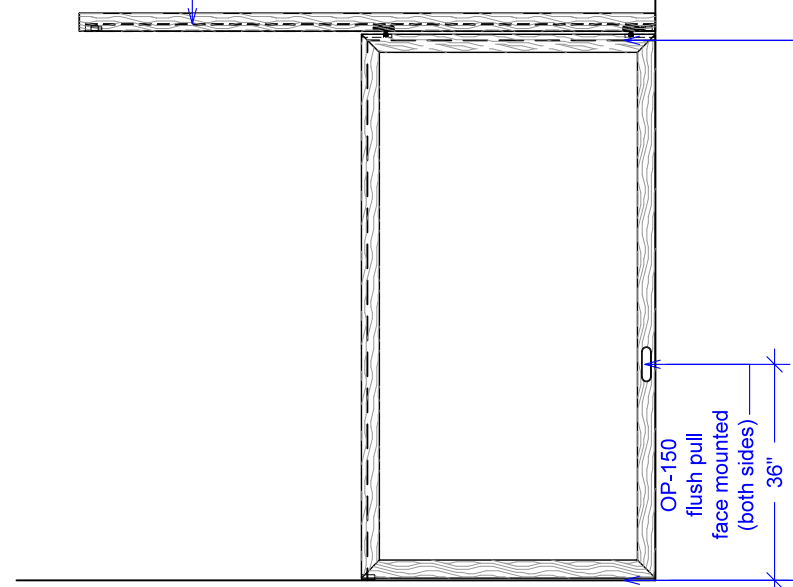
PLAN: open



PLAN: closed

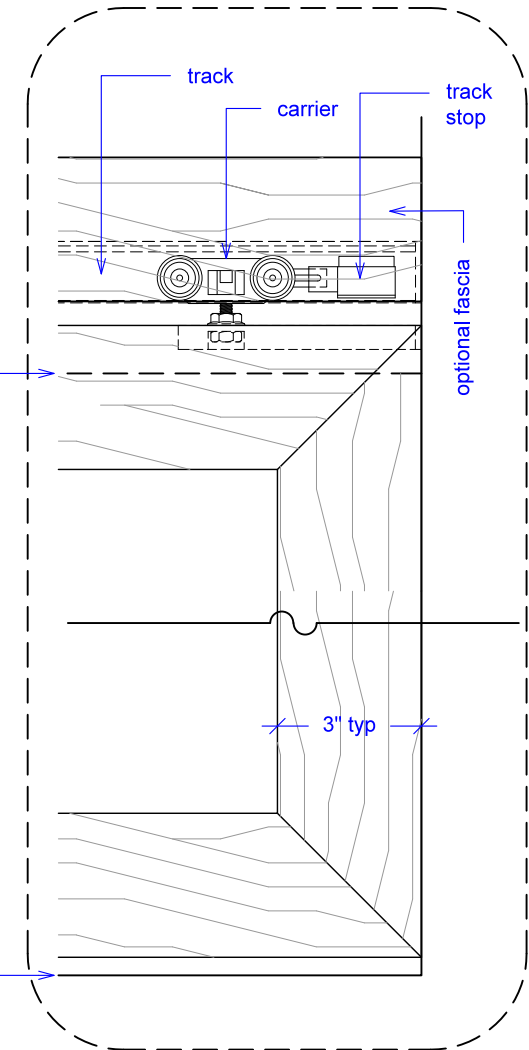


ELEVATION: closed



OPENING WIDTH

YOUR OPENING HEIGHT = PANEL - $\frac{5}{8}$ "
YOUR OPENING WIDTH = PANEL - 1"

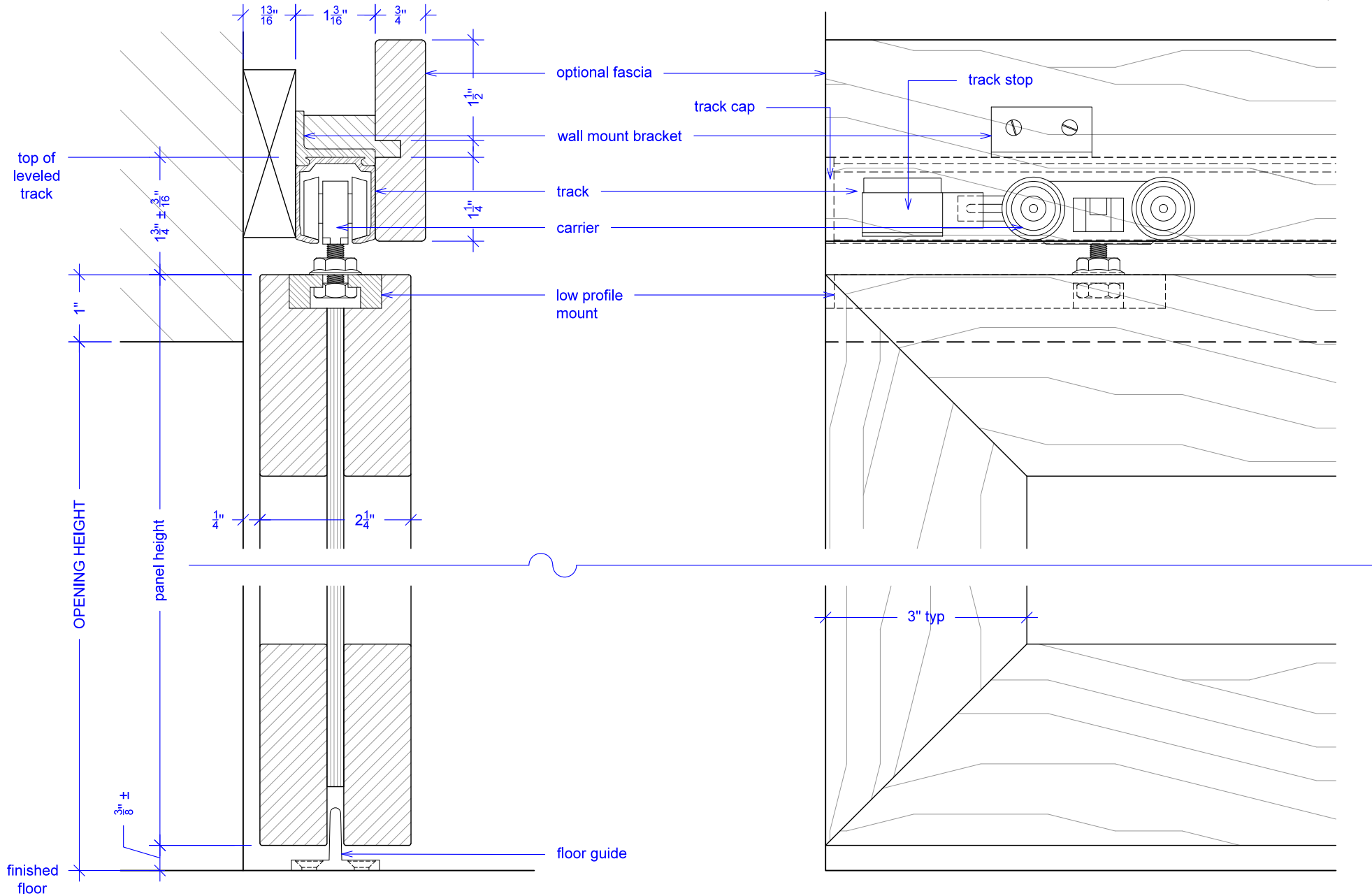


Sliding, 1 Panel, 1 Side Overlap, Wall Mount

(S1-1SO-WM-RD)

SECTION

RAYDOOR STANDARD
SYSTEM DRAWINGS
©2020



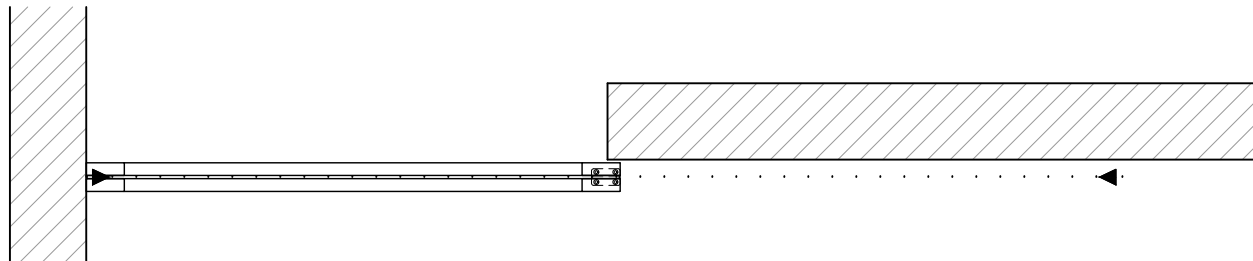
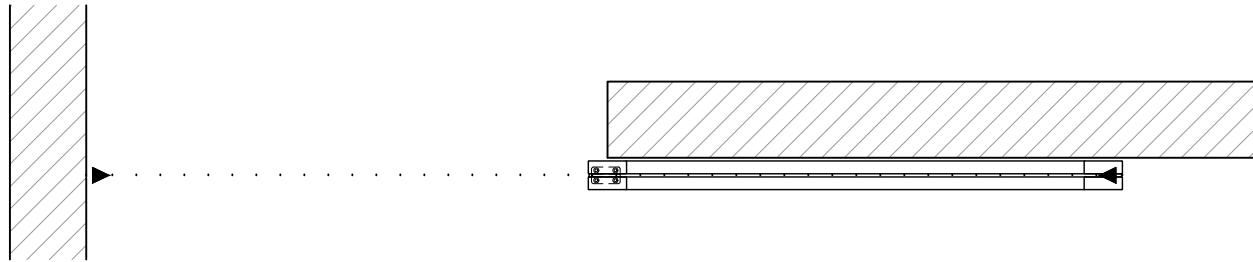
NOTE: each panel weights approximately 75-110 lbs.
Secure tracks accordingly.

Sliding, 1 Panel, 1 Side Overlap, Wall Mount

(S1-1SO-WM-RD)

OPERATION OVERVIEW

RAYDOOR STANDARD
SYSTEM DRAWINGS
©2020



KEY:



floor guide



track stop