

Sliding, 1 Panel, 1 Side Overlap

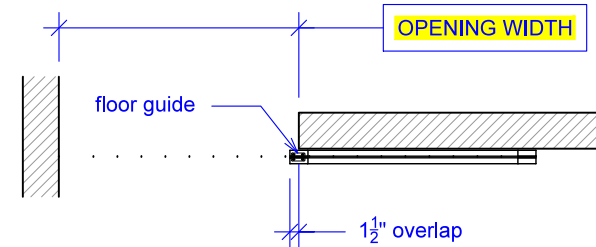
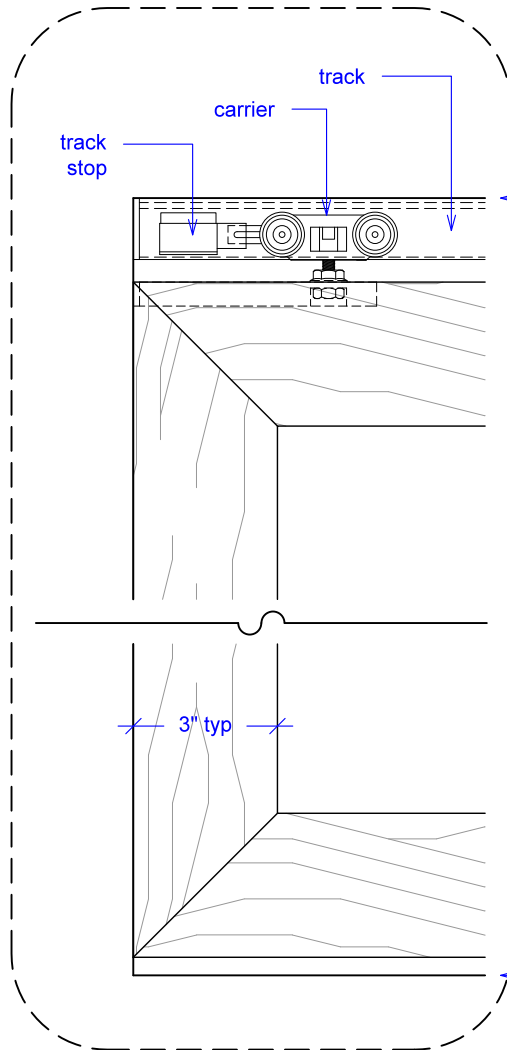
(S1-1SO-RD)

ELEVATION

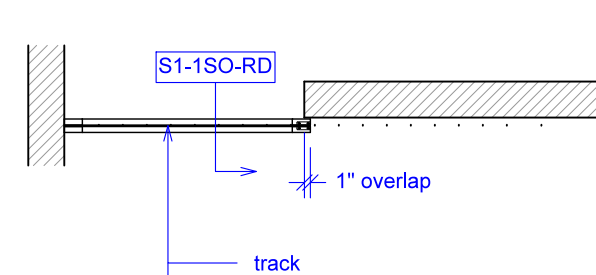
RAYDOOR STANDARD
SYSTEM DRAWINGS
©2020



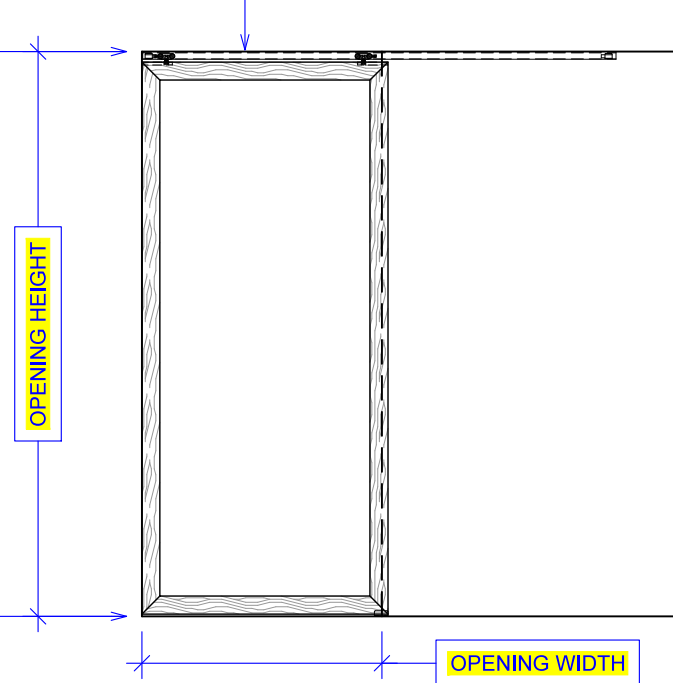
YOUR OPENING HEIGHT = PANEL + $2\frac{1}{8}$ "
YOUR OPENING WIDTH = PANEL - 1"



PLAN: open



PLAN: closed



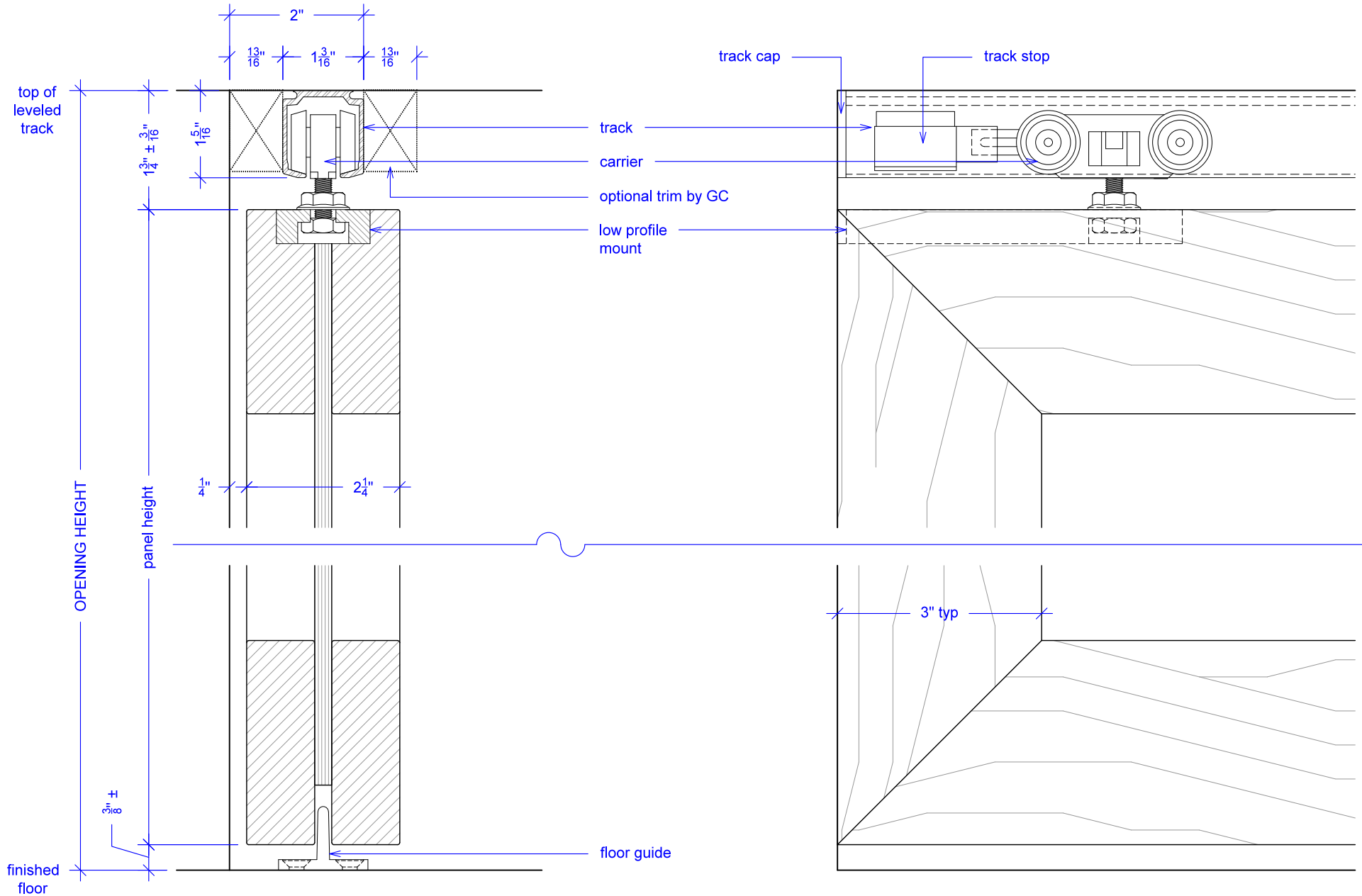
ELEVATION: closed

Sliding, 1 Panel, 1 Side Overlap

(S1-1SO-RD)

SECTION

RAYDOOR STANDARD
SYSTEM DRAWINGS
©2020



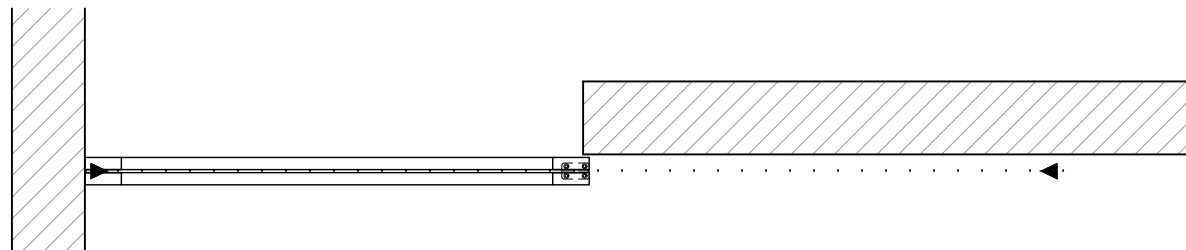
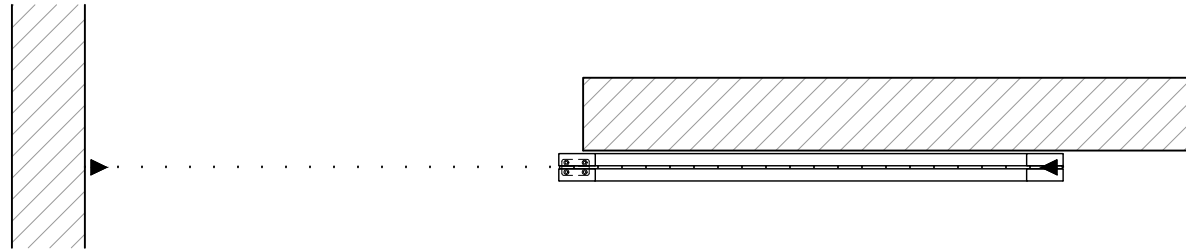
NOTE: each panel weights approximately 75-110 lbs.
Secure tracks accordingly.

Sliding, 1 Panel, 1 Side Overlap

(S1-1SO-RD)

OPERATION OVERVIEW

RAYDOOR STANDARD
SYSTEM DRAWINGS
©2020



KEY:



floor guide



track stop