

Sliding w/ Soft-Close, 1 Panel

(S1-WM-SC)

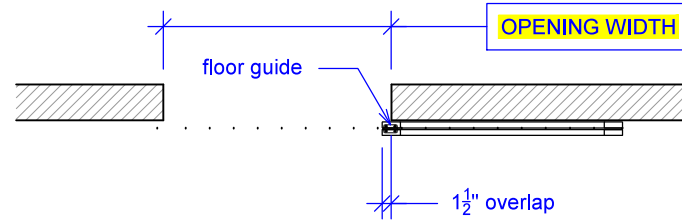
ELEVATION

RAYDOOR STANDARD
SYSTEM DRAWINGS
©2020

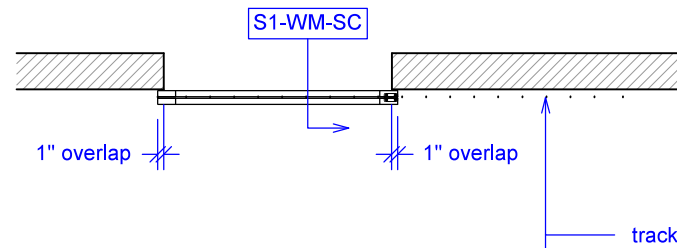


YOUR OPENING HEIGHT = PANEL - $\frac{5}{8}$ "
YOUR OPENING WIDTH = PANEL - 2"

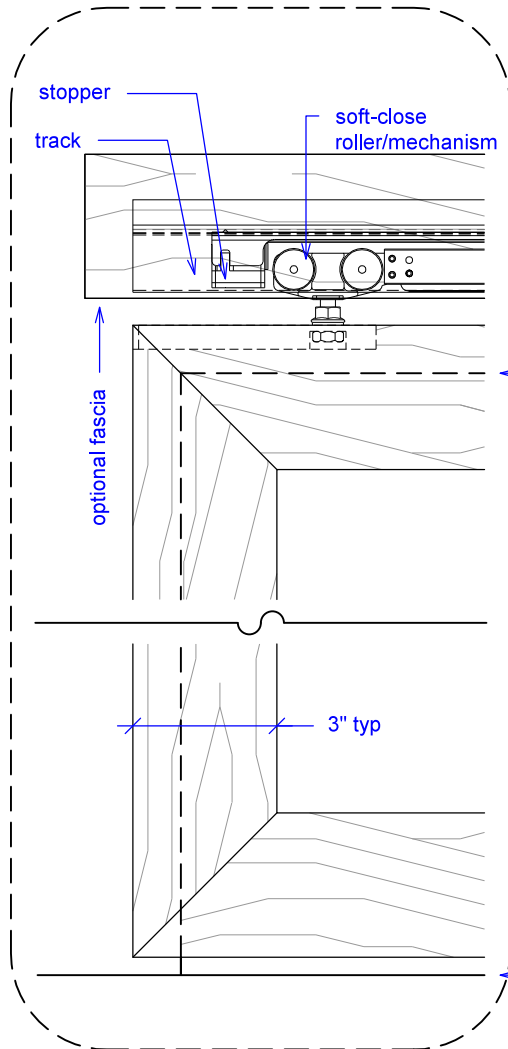
PLAN: open



PLAN: closed



ELEVATION: closed



top of opening

finished floor

OPENING HEIGHT

OPENING WIDTH

Sliding w/ Soft-Close, 1 Panel

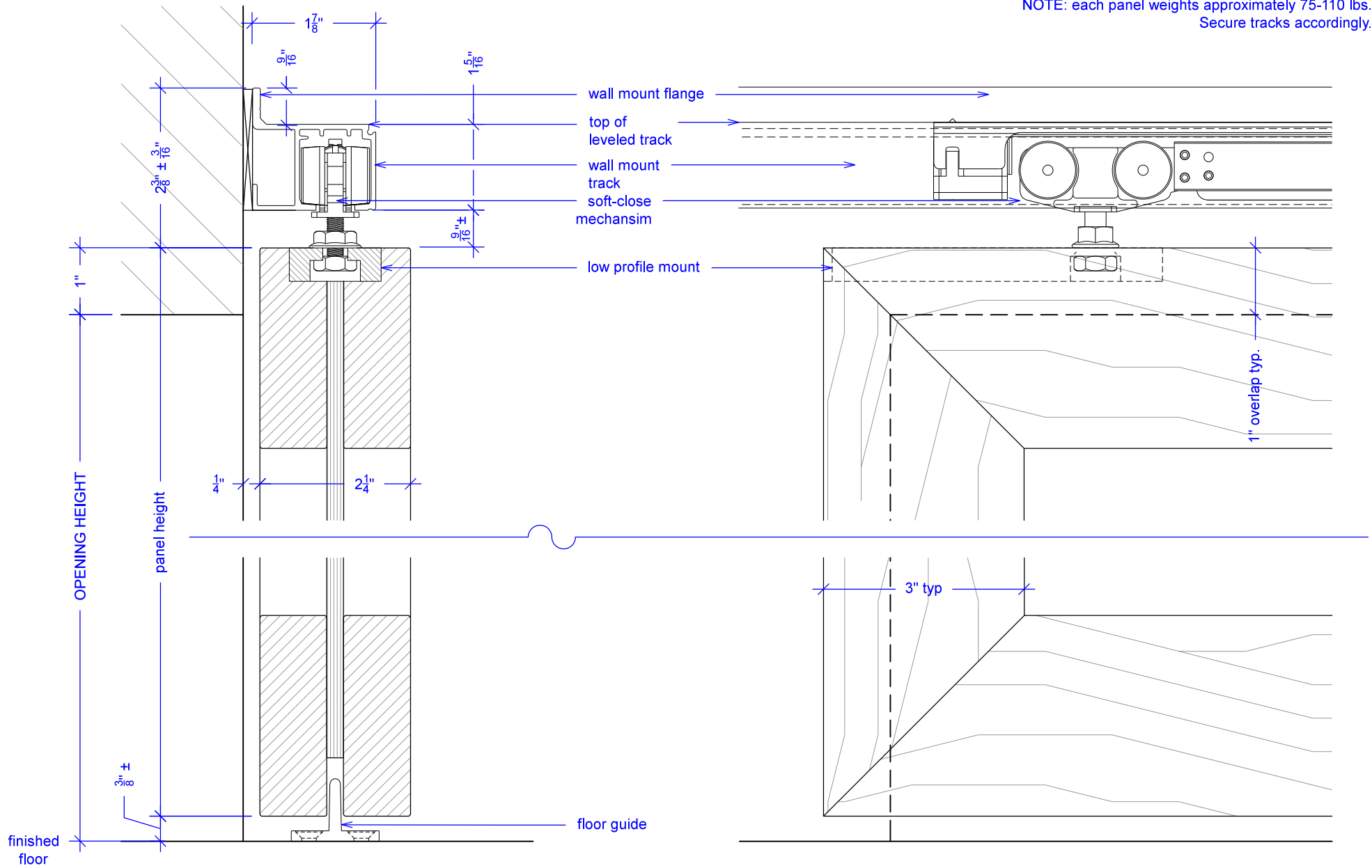
(S1-WM-SC)

SECTION

RAYDOOR STANDARD
SYSTEM DRAWINGS
©2020



NOTE: each panel weights approximately 75-110 lbs.
Secure tracks accordingly.

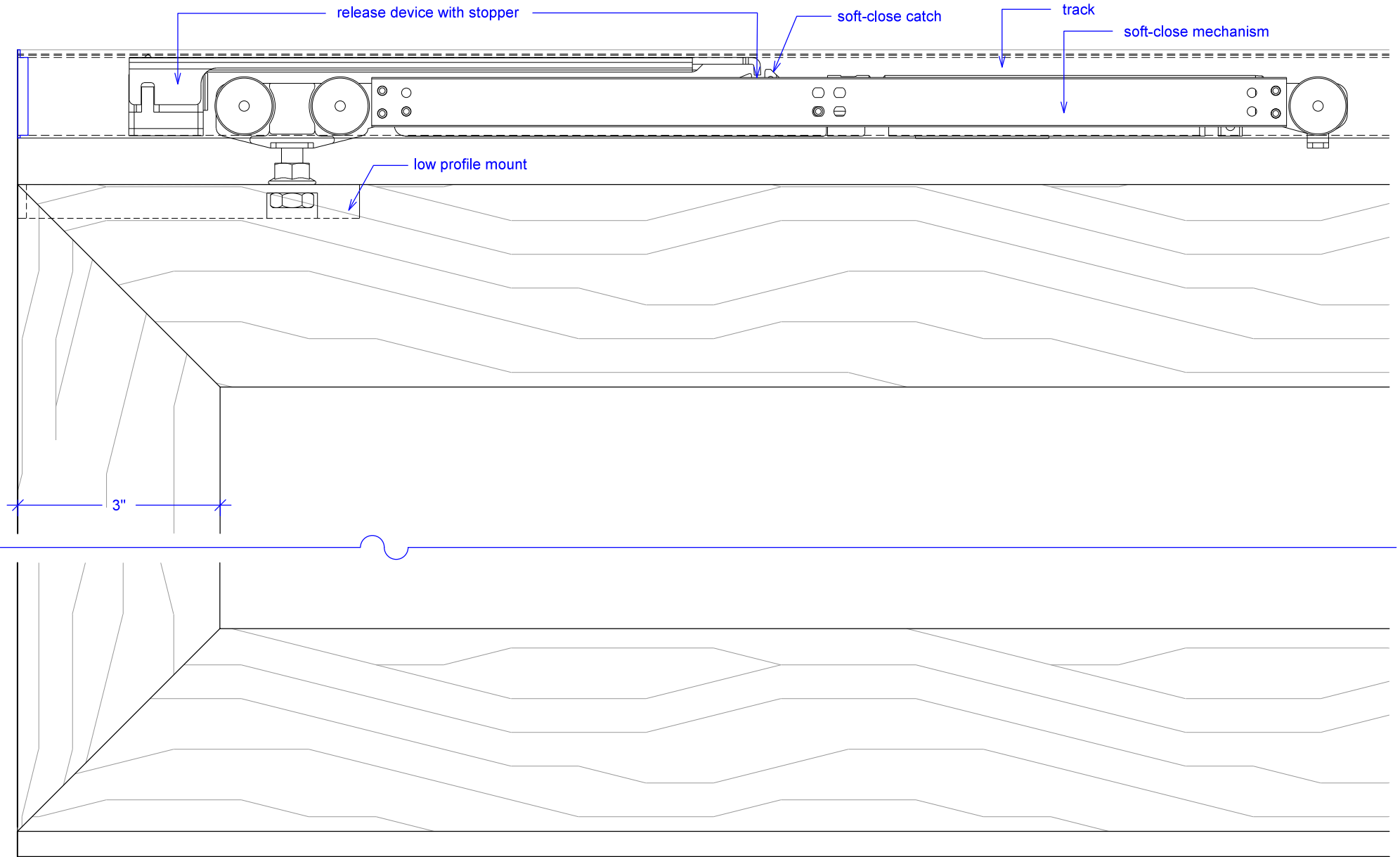


Sliding w/ Soft-Close, 1 Panel

(S1-WM-SC)

SOFT-CLOSE HARDWARE

RAYDOOR STANDARD
SYSTEM DRAWINGS
©2020

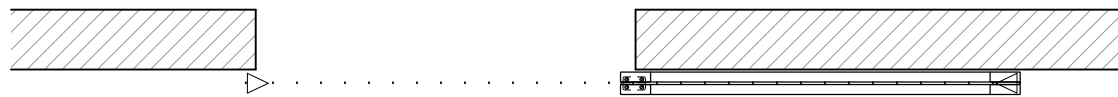


Sliding w/ Soft-Close, 1 Panel

(S1-WM-SC)

OPERATION OVERVIEW

RAYDOOR STANDARD
SYSTEM DRAWINGS
©2020



KEY:



floor guide



track stop