

# Folding End, 2 Panels w/ Single Pivot

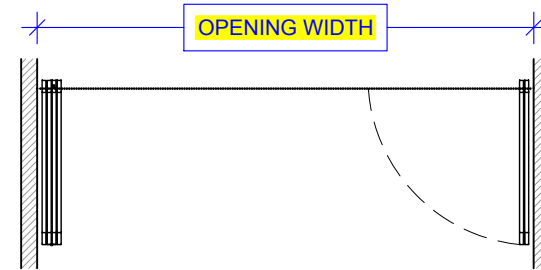
(FE2/PV1)

ELEVATION

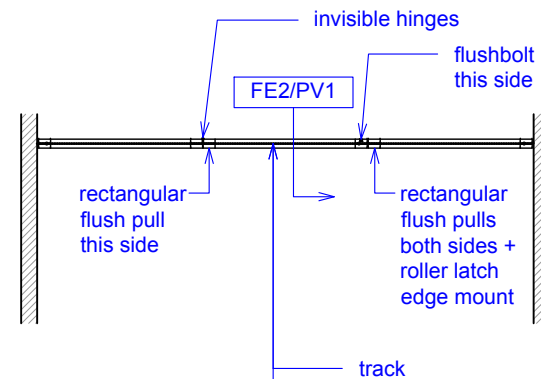
RAYDOOR STANDARD  
SYSTEM DRAWINGS  
©2021



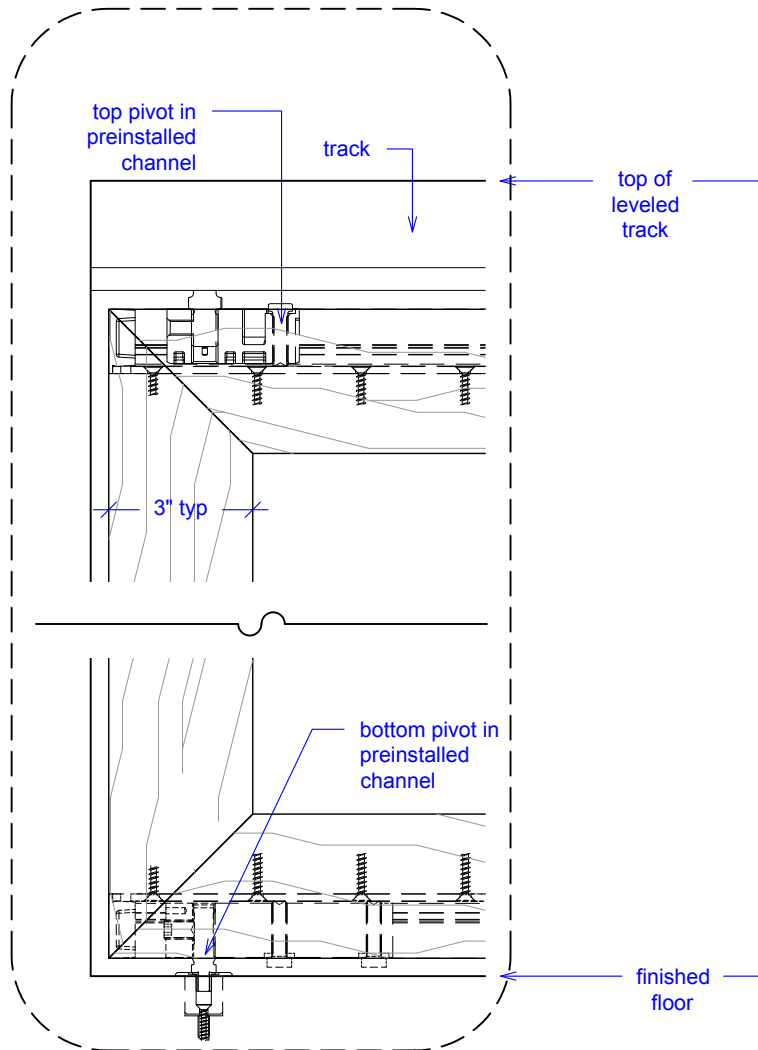
YOUR OPENING HEIGHT = PANEL +  $3\frac{1}{16}$ "  
YOUR OPENING WIDTH = (3 x PANEL) +  $2\frac{1}{16}$ "



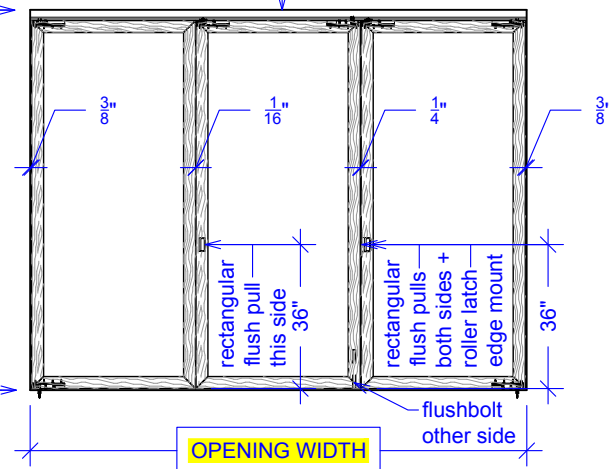
PLAN: open



PLAN: closed



ELEVATION: closed

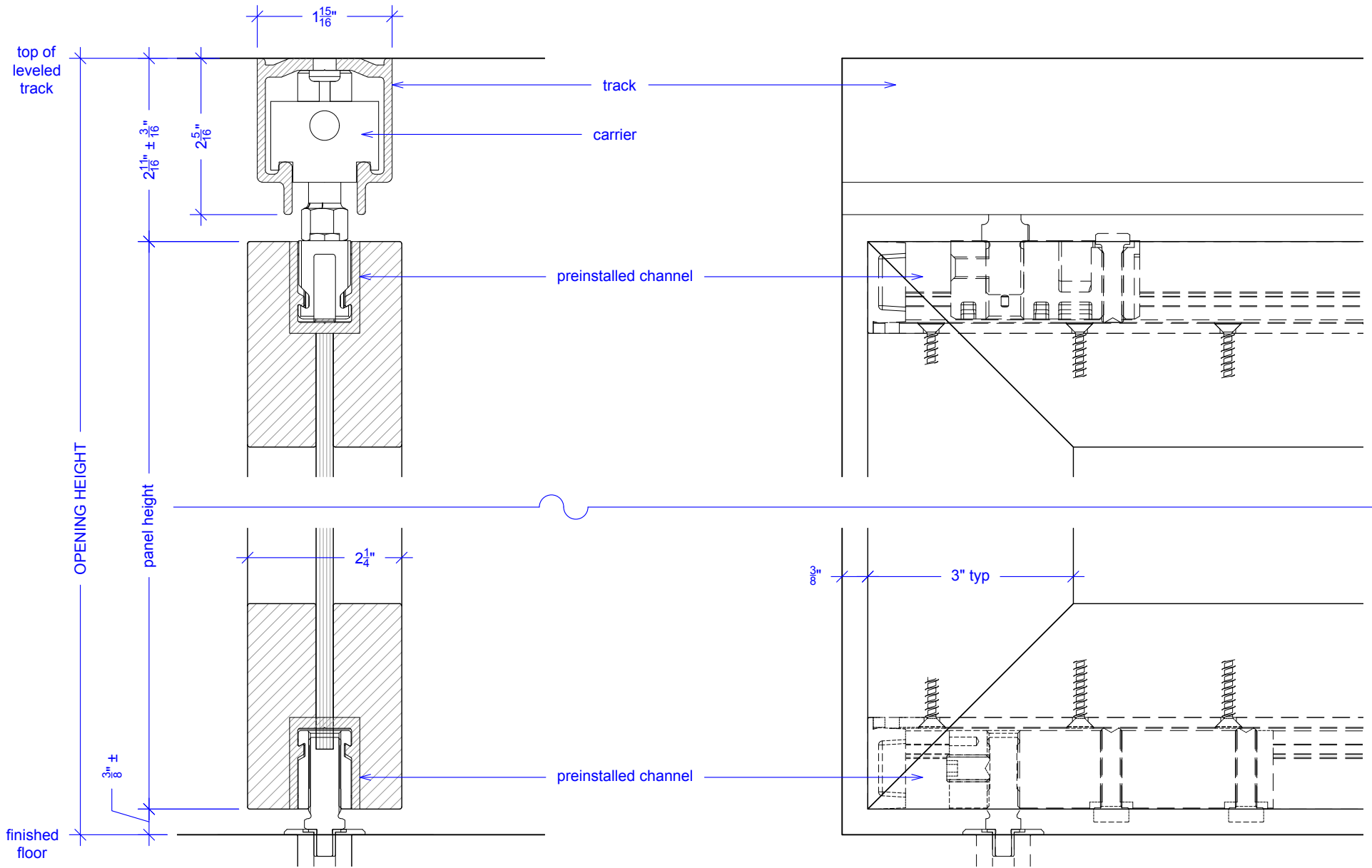


# Folding End, 2 Panels w/ Single Pivot

(FE2/PV1)

## SECTION

RAYDOOR STANDARD  
SYSTEM DRAWINGS  
©2021



# Folding End, 2 Panels w/ Single Pivot

(FE2/PV1)

## OPERATION OVERVIEW

RAYDOOR STANDARD  
SYSTEM DRAWINGS  
©2021

