

# Folding End, 4 Panels, Symmetrical

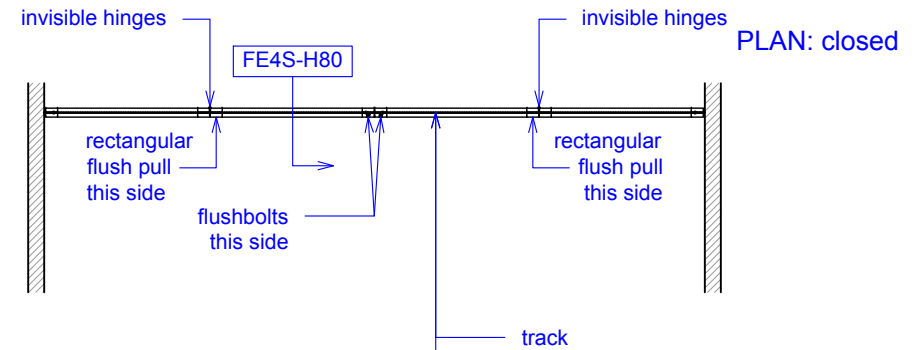
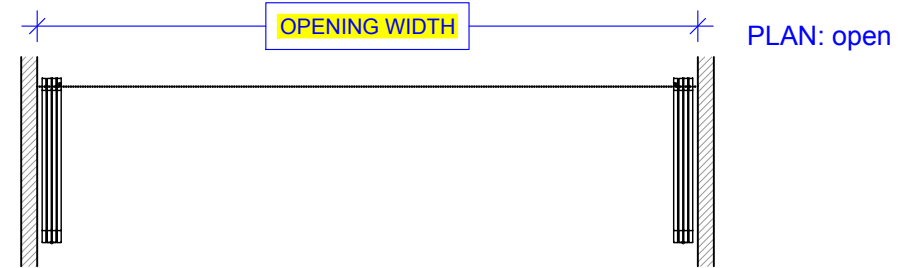
(FE4S)

ELEVATION

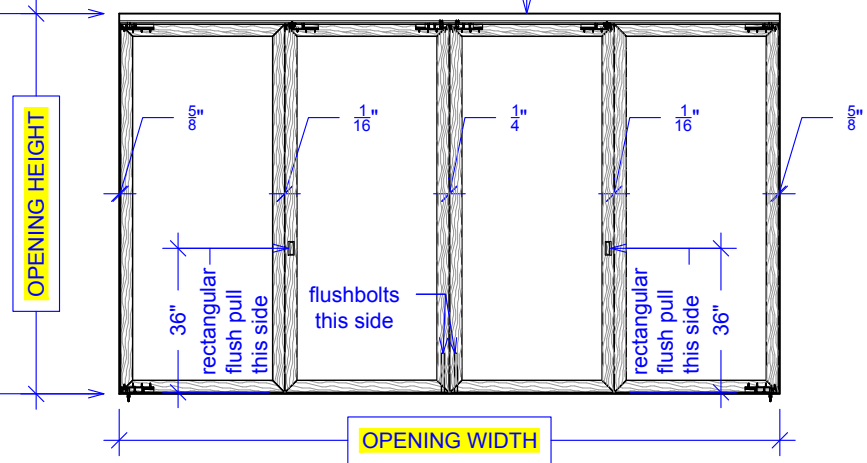
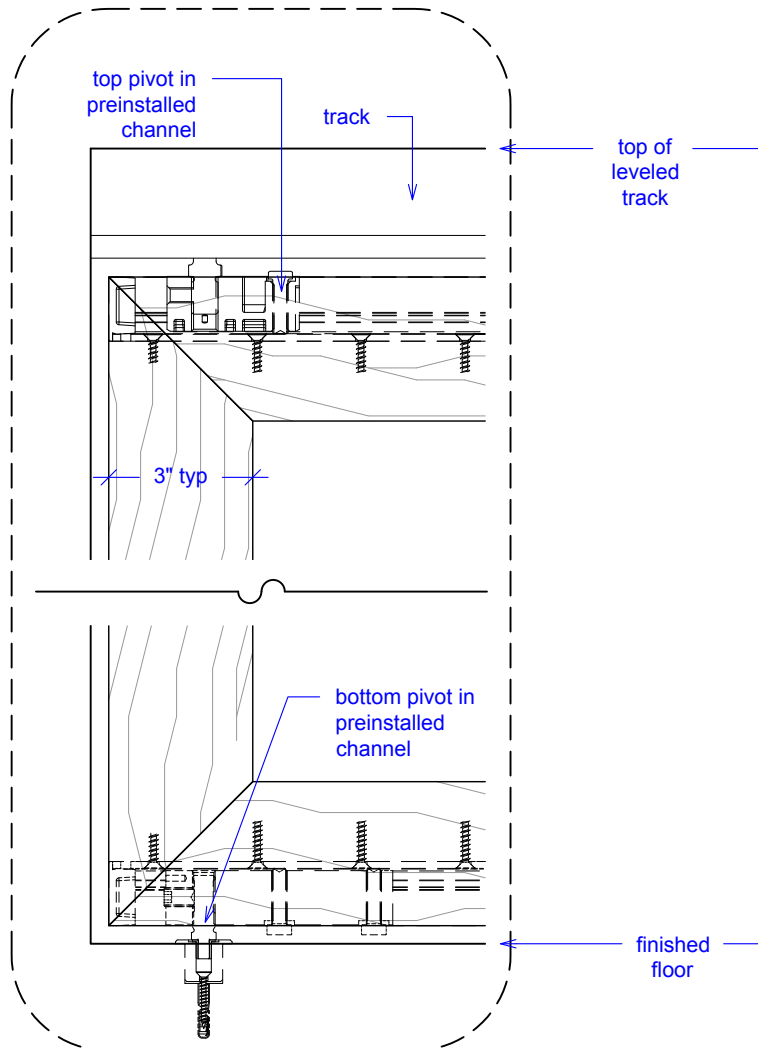
RAYDOOR STANDARD  
SYSTEM DRAWINGS  
©2022



YOUR OPENING HEIGHT = PANEL +  $3\frac{1}{16}$ "  
YOUR OPENING WIDTH = (4 x PANEL) +  $1\frac{5}{8}$ "



ELEVATION: closed

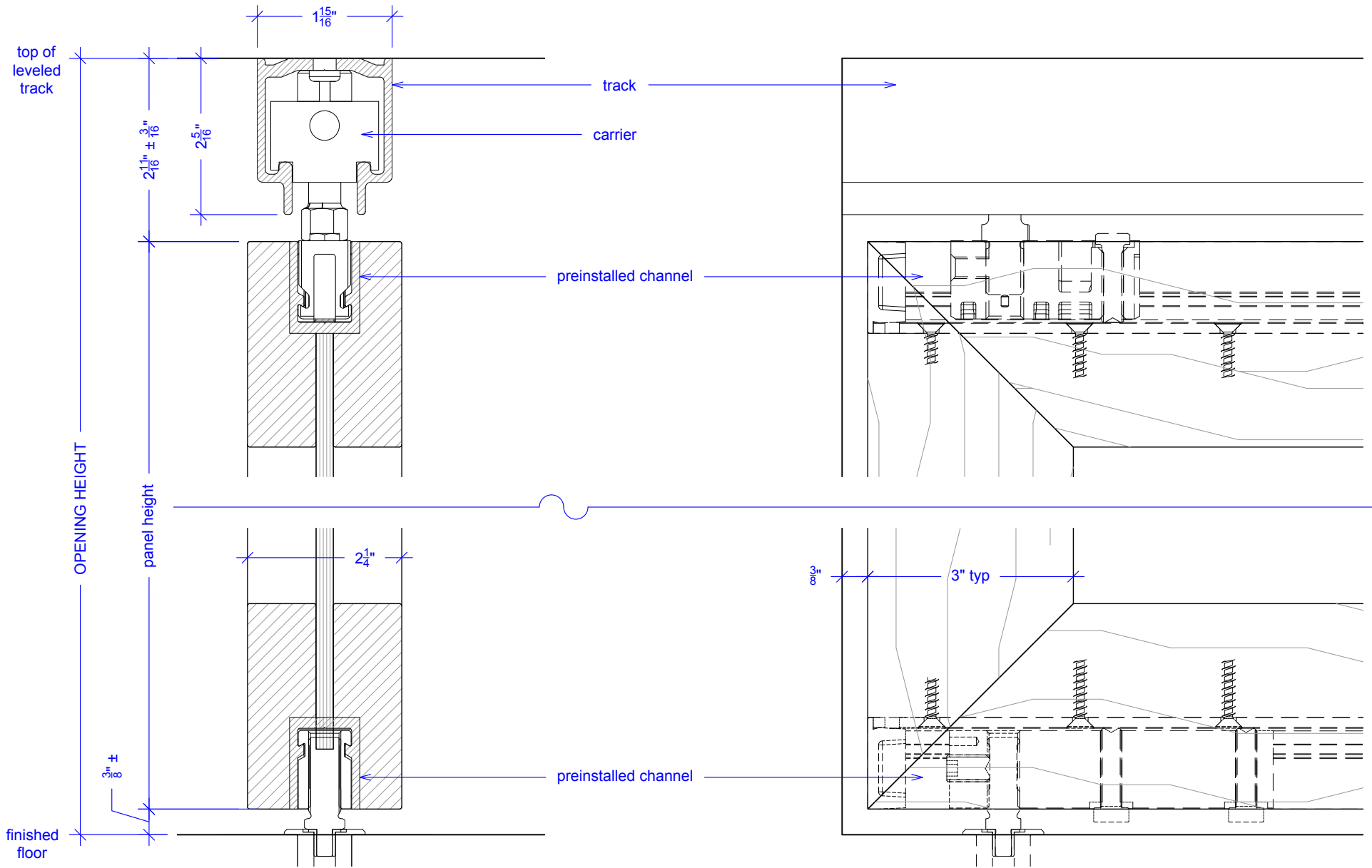


# Folding End, 4 Panels, Symmetrical

(FE4S)

SECTION

RAYDOOR STANDARD  
SYSTEM DRAWINGS  
©2022



NOTE: each panel weights approximately 75-110 lbs.  
Secure tracks accordingly.

# Folding End, 4 Panels, Symmetrical

(FE4S)

## OPERATION OVERVIEW

RAYDOOR STANDARD  
SYSTEM DRAWINGS  
©2022

