

# Sliding w/ Soft-Close, 2 Panels, Symmetrical

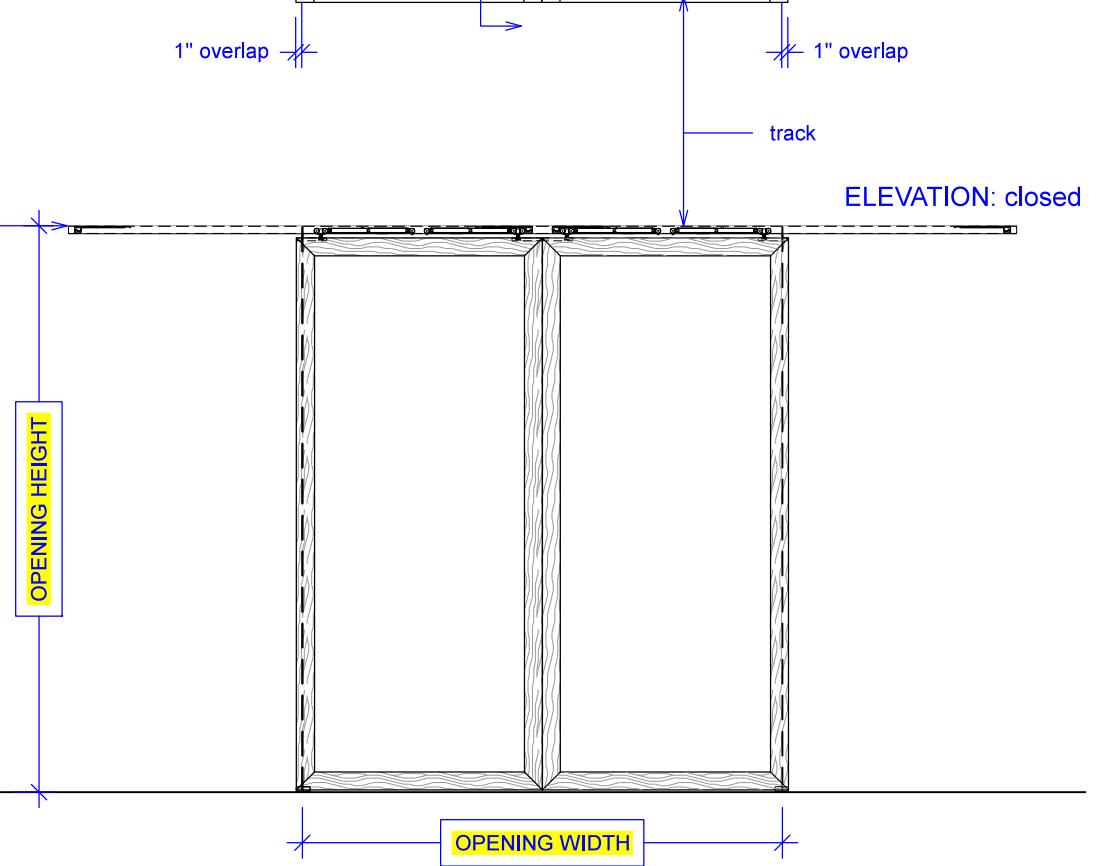
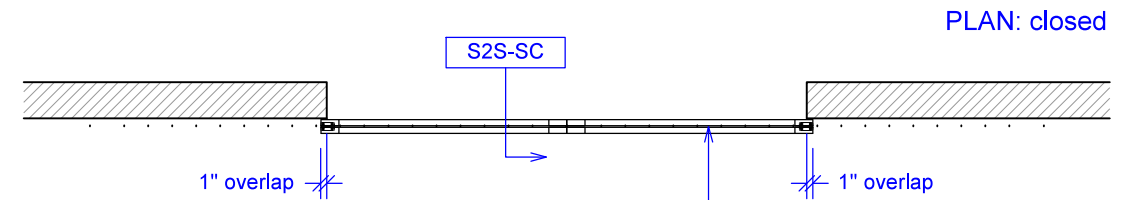
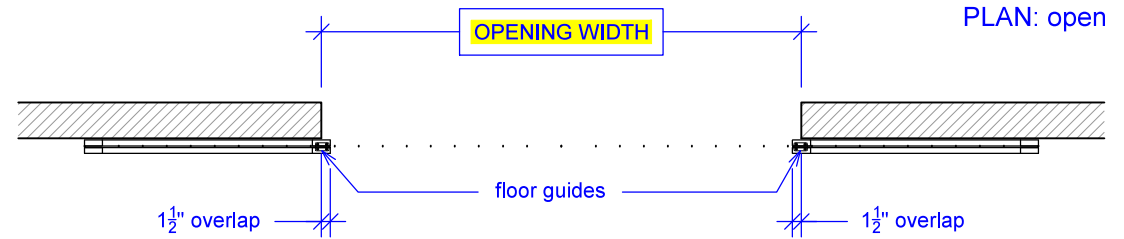
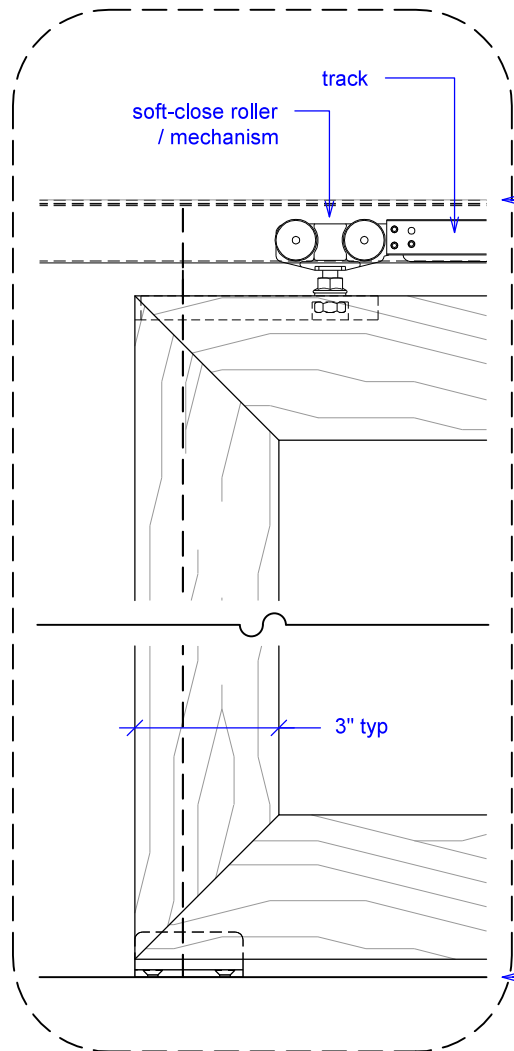
(S2S-SC)

ELEVATION

RAYDOOR STANDARD  
SYSTEM DRAWINGS  
©2020



YOUR OPENING HEIGHT = PANEL +  $2\frac{3}{8}$ "  
YOUR OPENING WIDTH = (2 x PANEL) - 2"

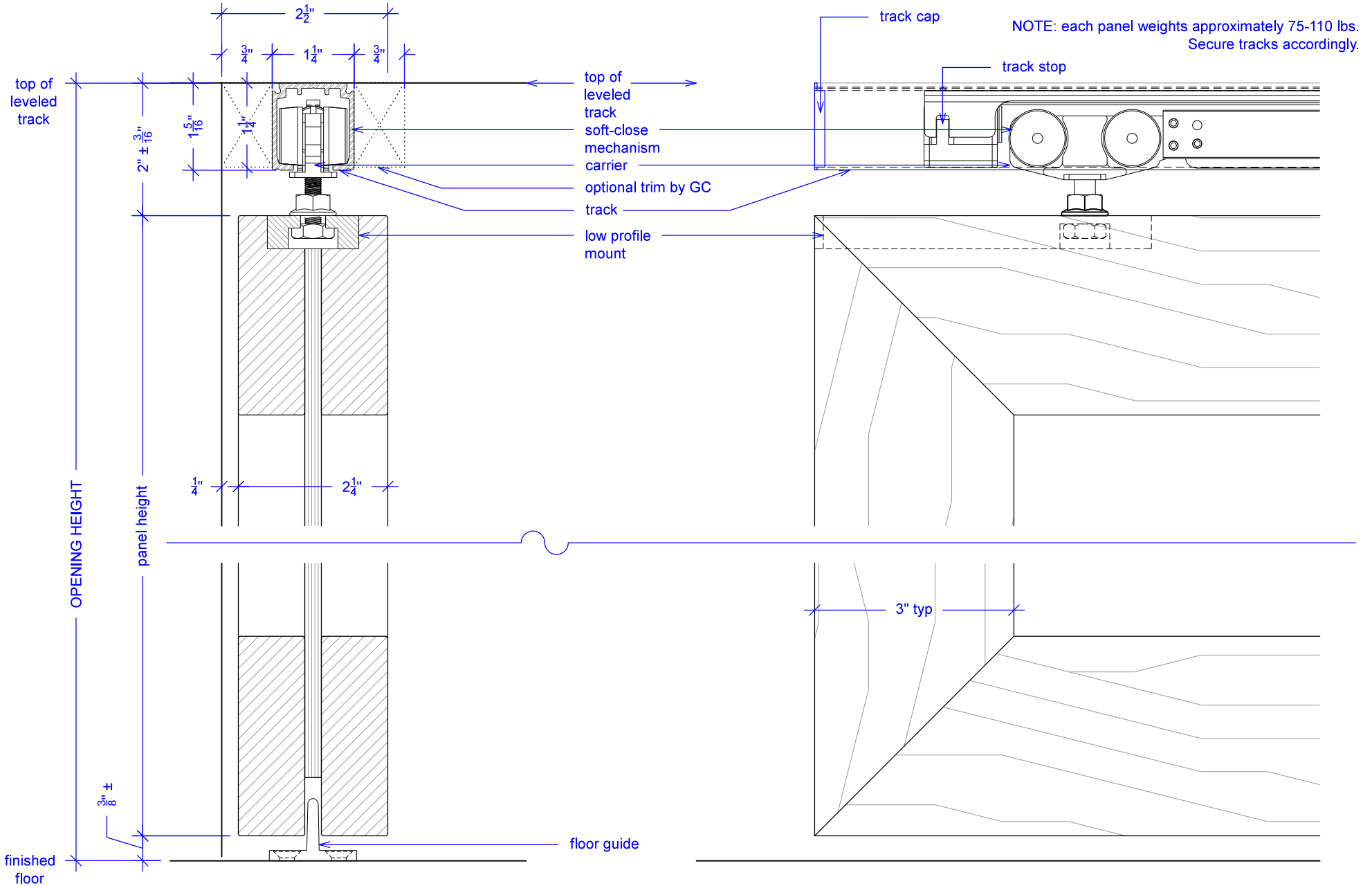


# Sliding w/ Soft-Close, 2 Panels, Symmetrical

(S2S-SC)

SECTION

RAYDOOR STANDARD  
SYSTEM DRAWINGS  
©2020

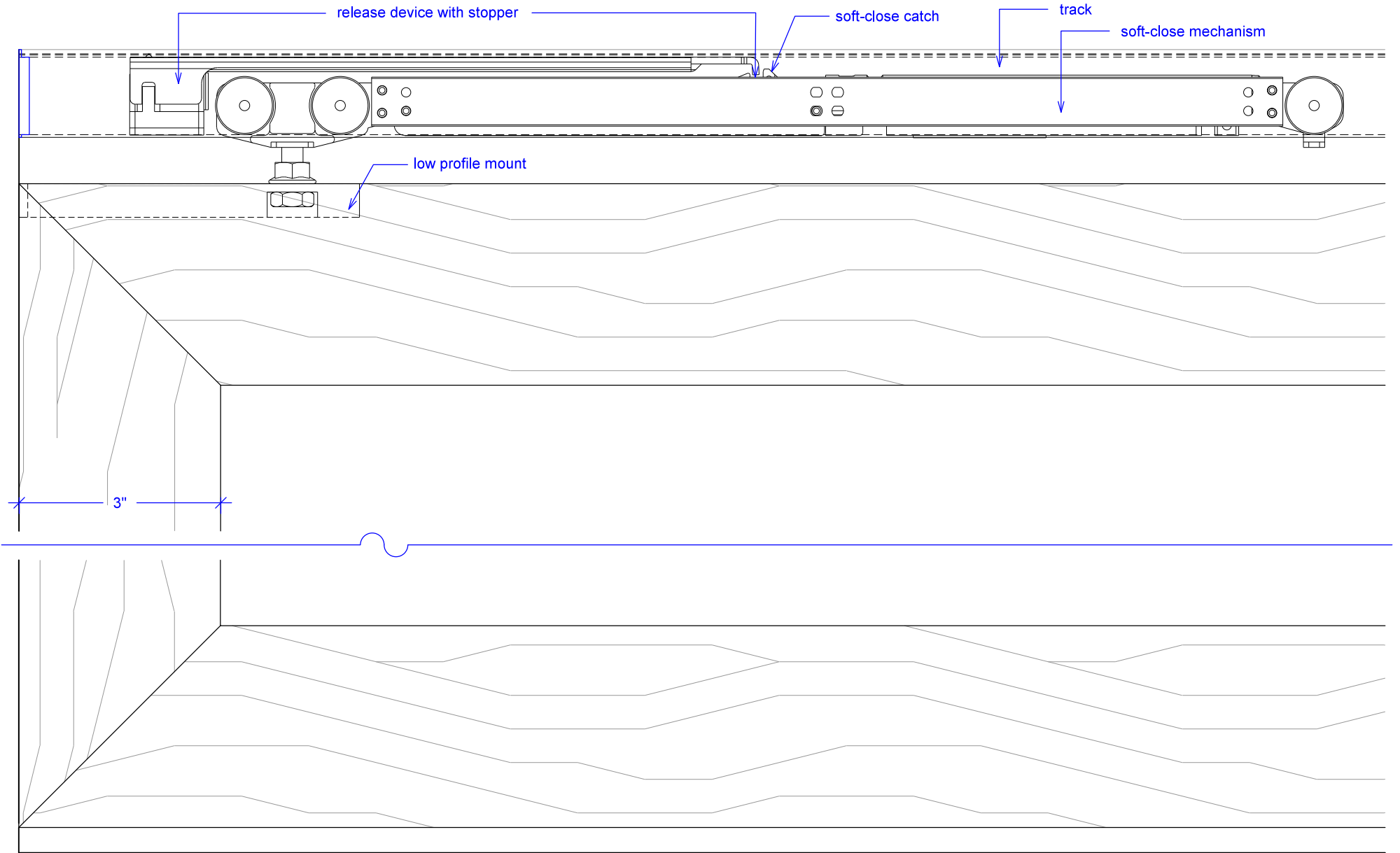


# Sliding w/ Soft-Close, 2 Panels, Symmetrical

(S2S-SC)

## SOFT-CLOSE HARDWARE

RAYDOOR STANDARD  
SYSTEM DRAWINGS  
©2020

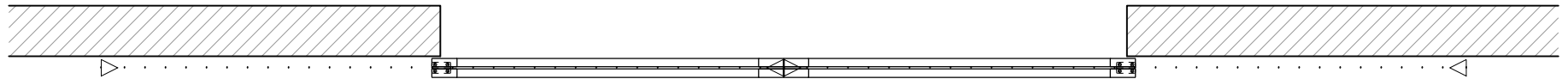
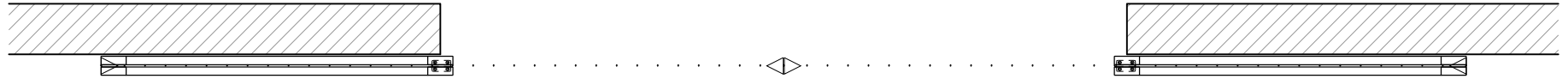


# Sliding w/ Soft-Close, 2 Panels, Symmetrical

(S2S-SC)

## OPERATION OVERVIEW

RAYDOOR STANDARD  
SYSTEM DRAWINGS  
©2020



KEY:



floor guide



Stopper / release device